

TECHNICAL BULLETIN

**INSTALLATION OF
CREW II MODIFICATION KIT
19207 – 12498005**

FOR

**CARRIER, COMMAND POST, FULL-TRACKED,
ARMORED, M577A3
2350-01-369-6085 (EIC AE7)**

AND

**STANDARD INTEGRATED COMMAND POST
SYSTEM (SICPS), M1068A3
2350-01-369-6086 (EIC AFC)**

DISTRIBUTION STATEMENT A: Approved for public release; distribution is unlimited.

HEADQUARTERS, DEPARTMENT OF THE ARMY

JUNE 2009

WARNING SUMMARY

WARNING SUMMARY

This list summarizes critical WARNINGS in this bulletin. They are repeated here to let you know how important they are. Study these WARNINGS carefully; they can save your life and the lives of personnel you work with.

LIST OF WARNINGS IN WP PROCEDURES

This list includes all WARNINGS in the bulletin. These WARNINGS must be studied carefully and obeyed. They can save your life and the lives of soldiers with whom you work. Failure to obey a warning could cause death or injury as well as destruction of, or damage to, the vehicle and/or equipment.

WARNING



Flammable or explosive compounds can ignite and seriously injure or kill personnel. Remove and stow all flammable and explosive materials from vehicle and surrounding area.

WARNING

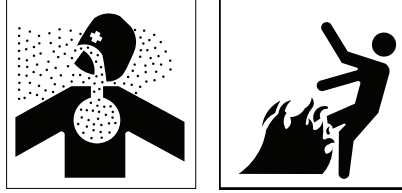


Hanging loads, heavy parts, and overhead equipment can fall unexpectedly. Falling loads can kill or seriously injure personnel.

Keep away from hanging loads, heavy parts, and overhead equipment. Use correct lifting devices to move hanging loads and heavy parts. Always have a helper guide you. Keep your hands and feet out of confined spaces in which heavy loads are being installed or removed.

WARNING SUMMARY – Continued

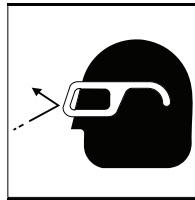
WARNING



Adhesive, primer, sealant compounds, and isopropyl alcohol are toxic and flammable. These compounds are toxic to eyes, skin, and respiratory tract. Continued exposure can make you dizzy and irritate your eyes and throat.

Always use in well ventilated areas, away from heat, sparks, and flames. Do not breathe fumes. Do not allow into contact with skin and eyes. Use goggles or face shield and protective gloves.

WARNING



Metal chips and grinding dust can cause eye injury. Wear goggles and gloves.

FIRST AID

For first aid information, see FM 4-25.11.

INSERT LATEST UPDATED PAGES/WORK PACKAGES. DESTROY SUPERSEDED DATA.

LIST OF EFFECTIVE PAGES/WORK PACKAGES

Note: The portion of text affected by the changes is indicated by a vertical line in the outer margins of the page. Changes to illustrations are indicated by miniature pointing hands.

Dates of issue for original and changed pages/work packages are:

Original 30 June 2009

TOTAL NUMBER OF PAGES FOR FRONT AND REAR MATTER IS 26 AND TOTAL NUMBER OF WORK PACKAGES IS 14 CONSISTING OF THE FOLLOWING:

Page/WP No.	*Change No.	Page/WP No.	*Change No.	Page/WP No.	*Change No.
Front Cover	0				
a/b	0				
A/B blank	0				
i – v/vi blank	0				
Chapter 1 Index	0				
WP 0001 00 – 0002 00	0				
Chapter 2 Index	0				
WP 0003 00 – 0005 00	0				
Chapter 3 Index	0				
WP 0006 00 – 0009 00	0				
Chapter 4 Index	0				
WP 0010 00 – 0014 00	0				
Index-1 – Index-2	0				
DA 2028 Sample/Reverse	0				
DA 2028/Reverse (3)	0				
Authentication	0				
Metric Chart	0				
Back Cover	0				

*Zero in the column indicates an original page or work package.

HEADQUARTERS
DEPARTMENT OF THE ARMY
WASHINGTON, D.C. 30 JUNE 2009

TECHNICAL BULLETIN

INSTALLATION OF CREW II MODIFICATION KIT 19207 – 12498005

FOR

**CARRIER, COMMAND POST, FULL-TRACKED,
ARMORED, M577A3
2350-01-369-6085 (EIC AE7)**

AND

**STANDARD INTEGRATED COMMAND POST SYSTEM
(SICPS), M1068A3
2350-01-369-6086 (EIC AFC)**

REPORTING ERRORS AND RECOMMENDING IMPROVEMENTS

You can help improve this publication. If you find any errors, or if you would like to recommend any improvements to the procedures in this publication, please let us know. The preferred method is to submit your DA Form 2028 (Recommended Changes to Publications and Blank Forms) through the Internet, on the Army Electronic Product Support (AEPS) website. The Internet address is <https://aeprs.ria.army.mil>. The DA Form 2028 is located under the Public Applications section in the AEPS Public Home Page. Fill out the form and click on SUBMIT. Using this form on the AEPS will enable us to respond quicker to your comments and better manage the DA Form 2028 program. You may also mail, e-mail, or fax your comments or DA Form 2028 directly to the U.S. Army TACOM Life Cycle Management Command. The postal mail address is U.S. Army TACOM Life Cycle Management Command, ATTN: AMSTA-LC-LMPP / TECH PUBS, 1 Rock Island Arsenal, Rock Island, IL 61299-7630. The e-mail address is tacomlcmc.daform2028@us.army.mil. The fax number is DSN 793-0726 or Commercial (309) 782-0726.

DISTRIBUTION STATEMENT A: Approved for public release; distribution is unlimited.

TABLE OF CONTENTS

	WP Sequence No.
	Page No.
WARNING SUMMARY	
CHAPTER 1 – GENERAL INFORMATION	
Introduction	0001 00
Table 1. Kit List	0001 00-2
Table 2. Retained Parts	0001 00-2
Table 3. Excess Parts to be Discarded.....	0001 00-3
Table 4. Parts Required (Not Furnished With Kit)	0001 00-3
Equipment Description	0002 00
Figure 1. CREW II Hardware	0002 00-2
Figure 2. Location of CREW II Mounting Components.....	0002 00-4
CHAPTER 2 – MAINTENANCE INSTRUCTIONS	
Removal Procedures	0003 00
Figure 1. Intercom Unit Removal (M1068A3 Only).....	0003 00-1
Figure 2. APU Controller Mounting Hardware Removal.....	0003 00-2
Figure 3. Extension Cover Tent Angle Bracket Mounting Hardware Removal	0003 00-3
Modification Procedures.....	0004 00
Figure 1. CREW II Primary Unit Clearance Provision	0004 00-2
Figure 2. Locate and Mark CREW II Cable Port.....	0004 00-3
Figure 3. Location for CREW II Cover Plate	0004 00-4
Figure 4. Location for CREW II Primary Unit Enclosure Mounting Bracket	0004 00-5
Figure 5. Location for Intercom Unit (M1068A3 Only)	0004 00-6
Figure 6. Location for CREW II Hull Roof RCU and GPS Cable Clamp.....	0004 00-7
Figure 7. Location for CREW II Right Rail Support Bracket RCU and GPS Cable Clamps	0004 00-8
Installation Procedures	0005 00
Figure 1. SINCGARS Antenna Removal	0005 00-2
Figure 2. Antenna Cover Removal.....	0005 00-3
Figure 3. GPS Sensor, Mounting Bracket, and Cable Installation.....	0005 00-4
Figure 4. GPS Cable Sealant Application.....	0005 00-5
Figure 5. SINCGARS Antenna Installation	0005 00-6
Figure 6. Antenna Cover Installation	0005 00-7
Figure 7. Crew II Antenna Stowage Bracket Installation	0005 00-8
Figure 8. Cable Port Installation.....	0005 00-9
Figure 9. Cable Port Sealant Application.....	0005 00-10
Figure 10. Primary Unit Enclosure Assembly Installation.....	0005 00-11
Figure 11. Primary Unit Enclosure Cover Installation.....	0005 00-12

TABLE OF CONTENTS – Continued

	WP Sequence No.
	Page No.
CHAPTER 2 – MAINTENANCE INSTRUCTIONS – Continued	
Installation Procedures – Continued.....	0005 00
Figure 12. Intercom Unit/Mounting Bracket Installation	0005 00-13
Figure 13. RCU/PDA Bracket Assembly (M1068A3 Only).....	0005 00-14
Figure 14. RCU/PDA Bracket Assembly Installation (M1068A3 Only)	0005 00-15
Figure 15. RCU/PDA Bracket Assembly (M577A3 Only).....	0005 00-16
Figure 16. RCU/PDA Bracket Assembly Installation (M577A3 Only)	0005 00-17
Figure 17. RCU Cable, GPS Cable, and Power Harness Clamps Installation.....	0005 00-18
Figure 18. RCU Cable, GPS Cable, and Power Harness Clamps Installation.....	0005 00-19
Figure 19. RCU Cable, GPS Cable, and Power Harness Installation.....	0005 00-20
Figure 20. RCU Cable, Power Harness, and RCU to PDA Cable Installation (M1068A3 Only)	0005 00-21
Figure 21. RCU Cable, Power Harness, and RCU to PDA Cable Installation (M577A3 Only)	0005 00-22
CHAPTER 3 – REPAIR PARTS AND SPECIAL TOOLS LIST (RPSTL)	
Repair Parts and Special Tools List (RPSTL) Introduction.....	0006 00
CREW II Modification Kit - 12498005	0007 00
Figure 1. CREW II Modification Kit - 12498005 (Sheet 1 of 4)	0007 00-1
Figure 1. CREW II Modification Kit - 12498005 (Sheet 2 of 4)	0007 00-2
Figure 1. CREW II Modification Kit - 12498005 (Sheet 3 of 4)	0007 00-3
Figure 1. CREW II Modification Kit - 12498005 (Sheet 4 of 4)	0007 00-4
National Stock Number Index	0008 00
Part Number Index.....	0009 00
CHAPTER 4 – SUPPORTING INFORMATION	
References.....	0010 00
Common Tools and Supplements and Special Tools/Fixtures List	0011 00
Table 1. Tool Identification List.....	0011 00-2
Fabricated Tools.....	0012 00
Figure 1. Magentic Drill Base Plate/Template.....	0012 00-1
Expendable/Durable Items List	0013 00
Table 1. Expendable/Durable Items List	0013 00-1
Replacement Kit Parts	0014 00
Table 1. CREW II Modification Kit - 12498005.....	0014 00-1
INDEX	INDEX-1

HOW TO USE THIS MANUAL

HOW TO USE THIS MANUAL

The safest, easiest, and best way to use and maintain Crew II is to use this bulletin. Learning to use this bulletin is as easy as reading it. Knowing what is in this bulletin and how to use it will save you time. Becoming familiar with the work, procedures, and cautions will help you in your job and reduce your exposure to unnecessary hazards.

WHERE DO YOU START

This bulletin is divided into chapters and front and rear matter. The chapters are further divided into Work Packages (WPs) for ease of use. Go to the area within the manual that covers what you are to do and follow the instructions. Be sure to read and follow the WARNINGS, CAUTIONS, and NOTES.

HOW THIS BULLETIN IS ORGANIZED

The WARNING SUMMARY section provides safety and first aid information. This section includes a list of the most important warnings extracted from the WPs. All of these warnings cover hazards that could kill or injure personnel.

The TABLE OF CONTENTS lists the WPs in each Chapter.

CHAPTER 1 covers general information.

CHAPTER 2 covers maintenance instructions.

CHAPTER 3 contains repair parts and special tools list information.

CHAPTER 4 contains supporting information, such as lists of references, tools, expendable/durable items, etc.

The INDEX is an alphabetical listing of all the WPs in this manual. Each entry is cross-referenced to the WP number and page number.

The DA FORM 2028 is used to report errors and to recommend improvements for procedures in this bulletin. Three blank DA Form 2028s are in the back of this bulletin.

The back cover includes a METRIC CONVERSION CHART that can be used to convert U.S. customary measurements to their metric equivalents. Measurements in this manual are given in U.S. customary unit with metric units in parentheses.

HOW TO USE THE WORK PACKAGES

Pick a key word and look in the INDEX for this key word. Turn to the WP and page indicated.

How to Read the WP

WPs provide either descriptive/supporting information or detailed procedures for repair.

Pay attention to all WARNINGS, CAUTIONS, and NOTES. These can appear in all types of procedures. They help you avoid harm to yourself, other personnel, and equipment. They also tell you things you should know about the procedure.

HOW TO USE THIS MANUAL (cont)

Before you start a procedure, get all the tools, supplies, and personnel you need to do the procedure. These items will be listed in the INITIAL SETUP of the WP.

Start with Step 1 and do each step in the order given. Numbered primary steps tell you WHAT to do. Alpha substeps tell you HOW to do it.

Look at the illustrations. Locators show you where the parts are located. Close-up illustrations show the details you need to do the procedure.

The words END OF WORK PACKAGE will tell you when you have finished the procedure.

DEFINITION OF WP TERMS

WARNINGS, CAUTIONS, and NOTES

Pay attention to all WARNINGS and CAUTIONS within the WP. Ignoring a WARNING could cause death or injury to yourself or other personnel. Ignoring a CAUTION could cause damage to equipment. NOTES contain facts to make the procedure easier. WARNINGS, CAUTIONS, and NOTES always appear just above the step to which they apply.

WARNING

Highlights an essential operating or maintenance procedure, practice, condition, statement, etc., which, if not strictly observed, could result in injury to, long term health hazards for, or death of, personnel.

CAUTION

Highlights an essential operating or maintenance procedure, practice, condition, statement, etc., which, if not strictly observed, could result in damage to or destruction of equipment, or loss of mission effectiveness.

NOTE

Highlights an essential operating or maintenance procedure, condition, or statement.

Helper

Helpers are needed in procedures that require more than one person. A helper may be needed to help lift objects or act as an outside observer.

If a helper is needed to perform a procedure, the INITIAL SETUP will list "Helper (H)" under the PERSONNEL REQUIRED heading.

If a helper assists with a step, the step will include: "Have helper assist."

If a helper performs the action alone, the step will start with "(H):."

**CHAPTER 1
GENERAL INFORMATION**

WORK PACKAGE INDEX

<u>Title</u>	<u>Sequence No.</u>
INTRODUCTION	0001 00
EQUIPMENT DESCRIPTION.....	0002 00

INTRODUCTION

0001 00**PURPOSE**

The purpose of this technical bulletin (TB) is to provide instructions and guidance on the method of modifying the M1068A3 Standard Integrated Command Post System and M577A3 Command Post Carrier for CREW II. It further provides instruction on the installation of the CREW II modification kit P/N 12498005. The CREW II modification kit provides mounting for the next generation of improvised explosive device (IED) jammers. The modular CREW II "plug and play" design, allows the main line replaceable unit (LRU), FRF105C dual antenna, and the remote control unit (RCU) to be utilized by any Heavy Brigade Combat Team (HBCT) vehicle. The M1068A3 and M577A3 locations were chosen to provide the least impact on mission requirements, for example the command post integrated systems computer equipment must retain full operator access and operational capability.

GENERAL

1. Priority. This bulletin is classified NORMAL.
2. End item(s) to be modified. This TB applies to the M577A3, Full-Track Armored Command Post Carrier, 2350-01-369-6085, P/N 8750286 and M1068A3, Standard Integrated Command Post System (SICPS), 2350-01-369-6086, P/N 8750288.
3. Module(s) (components, assemblies, subassemblies, boards, and cards) to be modified. Not applicable.
4. Parts to be modified. Not applicable.
5. Application.
 - a. Time compliance schedule. Not applicable.
 - b. Lowest level of maintenance authorized to apply this modification. The lowest level of maintenance authorized to perform installation described by this TB is Sustainment.
 - c. Work force and man-hour requirements for application of the modification to a single unit, end item, or system. A mechanic and helper require approximately 5 man-hours to install.
 - d. Modifications to be applied to or concurrently with the application of this kit. Not applicable.
 - e. Additional information deemed necessary to assist in the application of this modification. Kit application will be concurrent with other depot overhaul/conversion programs, as applicable.
6. Technical publications affected/changed. The installation will be supported by TM 9-2350-277 series technical manuals with the upcoming Change 6.

7. Modification kits, parts, and their disposition.
- a. Kit(s)/Part(s) needed to apply this modification.
- (1) Kit listing is found in Table 1.
- (2) Shipping data. Not applicable.

Table 1. Kit List

KIT NO.	CAGE	KIT NOMENCLATURE	NSN
12498005	19207	Modification Kit, CREW II, M1068A3/M577A3	

- b. Contents of modification kit. Kit 12498005 parts are listed in WP 0014 00.
- c. Parts that are removed and retained for reuse are listed in Table 2.

Table 2. Retained Parts

QTY.	NOMENCLATURE	PART NUMBER	CAGE	NSN
1	Antenna	AS-3900	1R8M6	5985-01-551-1218
1	Cover, Access	10861974	80212	5340-00-851-4894
1*	Intercom Box	C2298/VRC	80063	5830-00-892-3339
* M1068A3 Standard Integrated Command Post System (SICPS)				

- d. Bulk and expendable material. Expendable material is listed in WP 0013 00.

- e. Parts disposition. Parts removed and not reinstalled are considered excess for TB application. Excess parts listed in Table 3 should be discarded IAW AR 725-50 or local salvage regulations.

Table 3. Excess Parts to be Discarded

QTY.	NOMENCLATURE	PART NUMBER	CAGE	NSN
1	Loop, Strap, Fastener	10875556	19207	5340-00-898-5306
2	Loop, Strap, Fastener	10875599	19207	5340-00-901-8124
2	Screw, Cap, Hexagon H	MS35297-60	96906	5305-00-550-1310
2	Washer, Flat	MS27183-15	96906	5310-00-809-4061
2*	Bolt, Machine	B1821BH038C100L	80204	5306-01-114-0963
2*	Washer, Lock	MS35340-46	96906	5310-00-959-4675
2*	Washer, Flat	MS27183-14	96906	5310-00-080-6004
2*	Nut, Plain, Hexagon	MS35690-522	96906	5310-00-582-5615
4*	Washer, Lock	MS45904-72	96906	5310-00-889-2527
2*	Screw, Cap, Hexagon H	B1821BH031F100N	80204	5305-00-051-4076
3**	Bolt, Machine	B1821BH038C100L	80204	5306-01-114-0963
3**	Washer, Lock	MS35340-46	96906	5310-00-959-4675
3**	Washer, Flat	MS27183-14	96906	5310-00-080-6004
* M1068A3 Standard Integrated Command Post System (SICPS)				
** M577A3 Command Post Carrier				

- 8. Special tools, tool kits, jigs, test, measurement, and diagnostic equipment (TMDE); and fixtures required. Installation requires common hand and power tools (wrenches, drill, etc.) furnished by the maintenance shop/contractor. No special TMDE, jigs, or fixtures are required.
- 9. Expendable/durable items list. See WP 0013 00.
- 10. Calibration requirements. No calibration is required.
- 11. Weight and balance data. Weight and balance are not affected.
- 12. Facilities. No special facilities are required. No welding is required.

13. Inspection requirements.

- a. Prior to kit installation, inspect all mounting provisions for signs of fatigue failure, cracking, and loose or missing attaching hardware. The CREW II kit cannot be installed until certain hull mounting provisions have been completed. See WP 0003 00 and WP 0004 00 for hull preparation procedures.
- b. Ensure all kit parts are available prior to installation. See WP 0014 00 for a list of kit parts. Inspect all kit parts for signs of cracking or distortion of the supports and brackets, damaged cables, and missing hardware.
- c. After kit installation, ensure all kit components are mounted securely. Inspect the new cables to ensure they are securely clamped and tied to the existing cables and are not going to be pinched or damaged during carrier operation.

14. Tools and Equipment.

- a. Commonly-used tools and equipment having application to field support maintenance, in general, furnished by the maintenance activity/contractor. See WP 0011 00.
- b. Special tools: See WP 0011 00.
- c. Fabricated tools: See WP 0012 00.

15. Recording and reporting of the installation.

- a. Reporting requirements. Refer to AR 750-10/DA Pamphlet 750-8.
- b. Marking equipment. No marking of equipment or vehicle is required.

16. Material change (MC) number. Not applicable.

END OF WORK PACKAGE

EQUIPMENT DESCRIPTION

0002 00

CREW II HARDWARE

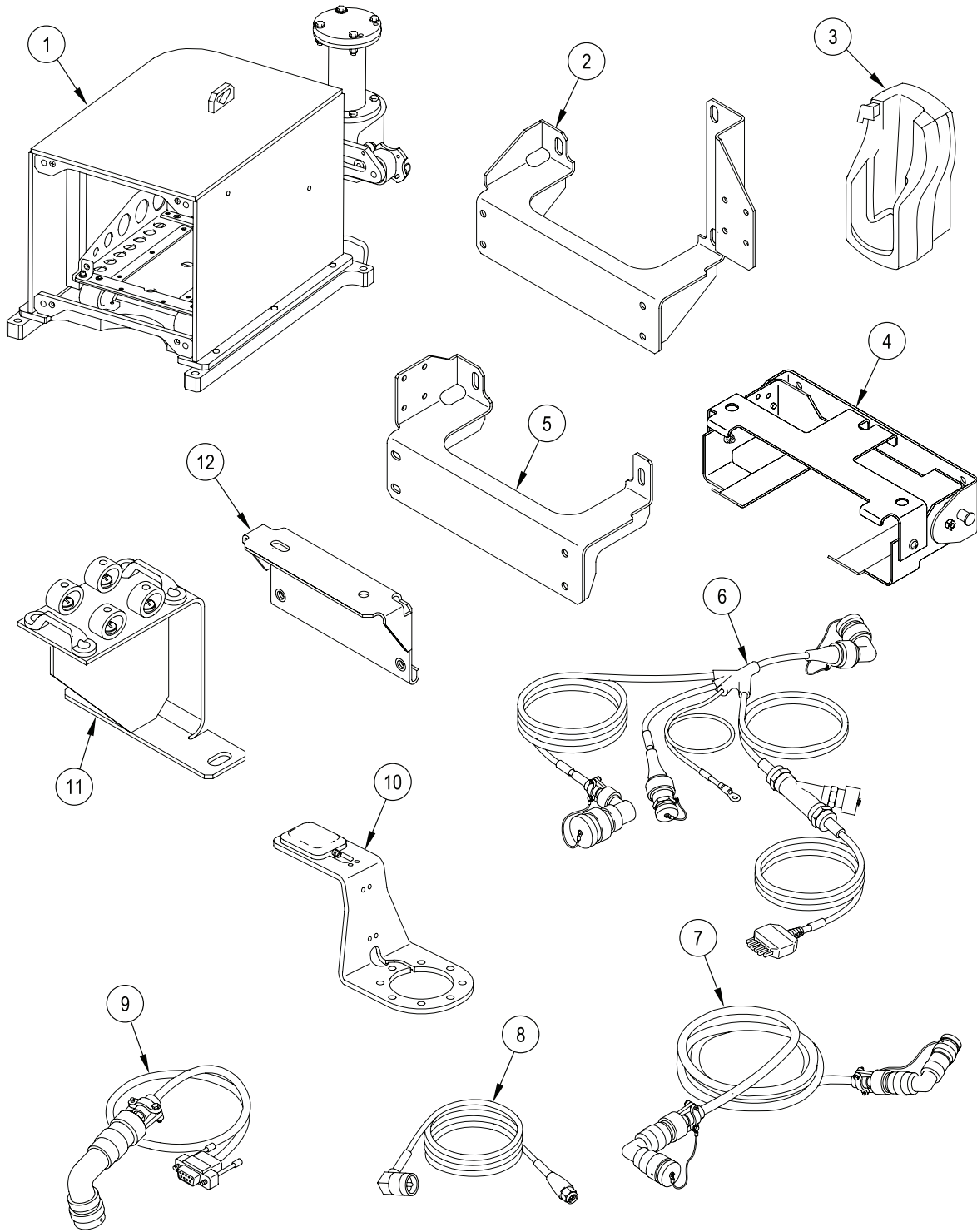


Figure 1. CREW II Hardware

EQUIPMENT DESCRIPTION – Continued

0002 00

KEY	NOMENCLATURE	FUNCTION
1	CREW II Primary Unit Enclosure	Provides ballistic and environmental protection to the CREW II primary unit necessary with exterior mounting.
2*	Remote Control Unit (RCU)/Personal Digital Assistant (PDA) Cradle Mounting Bracket Assembly	Supports the RCU mounting bracket and PDA cradle
3	PDA Cradle	Provides hands-free operation of the PDA while the operator is in the carrier. It can also be used for charging the PDA main battery and the PDA internal memory battery. Power is provided via the vehicle power cable.
4	RCU Mounting Bracket	Supports the RCU.
5**	RCU/PDA Cradle Mounting Bracket Assembly	Supports the RCU mounting bracket and PDA cradle
6	Power Harness	Provides power to the vehicle cradle from the vehicle power source. It contains a 5-amp in-line circuit breaker. The circuit breaker provides over current protection to the PDA. If the circuit breaker trips due to over current condition, the circuit breaker can be reset.
7	RCU Cable	Main interface cable between CREW II Primary Unit located on the rear exterior of the vehicle roof and the RCU.
8	Global Positioning System (GPS) Cable	Provides GPS positioning data from the GPS sensor to the CREW II Primary Unit.
9	Tactical PDA Cable	Connects the PDA interface cable to the RCU. This cable is used when the PDA is being operated in the PDA (vehicle) cradle (3) or in the desktop cradle.
10	GPS Kit with Mounting Assembly	Provides GPS sensor and exterior bracket that will work with or without an antenna installed.
11	CREW II Antenna Stowage Bracket Assembly	Stows and secures CREW II antenna when not in use.
12*	Intercom Box Mounting Bracket	Provides intercom box a new mounting location.
* M1068A3 Standard Integrated Command Post System (SICPS)		
** M577A3 Command Post Carrier		

LOCATION OF CREW II MOUNTING COMPONENTS

The primary unit (2) is mounted on the right rear of the vehicle roof. The antenna stowage bracket (1) is mounted on the left rear corner of the vehicle roof. The RCU/PDA cradle and bracket assembly (4) is mounted on the upper right side engine bulkhead with the GPS mounting bracket and antenna (3) located just above on the right front upper hull.

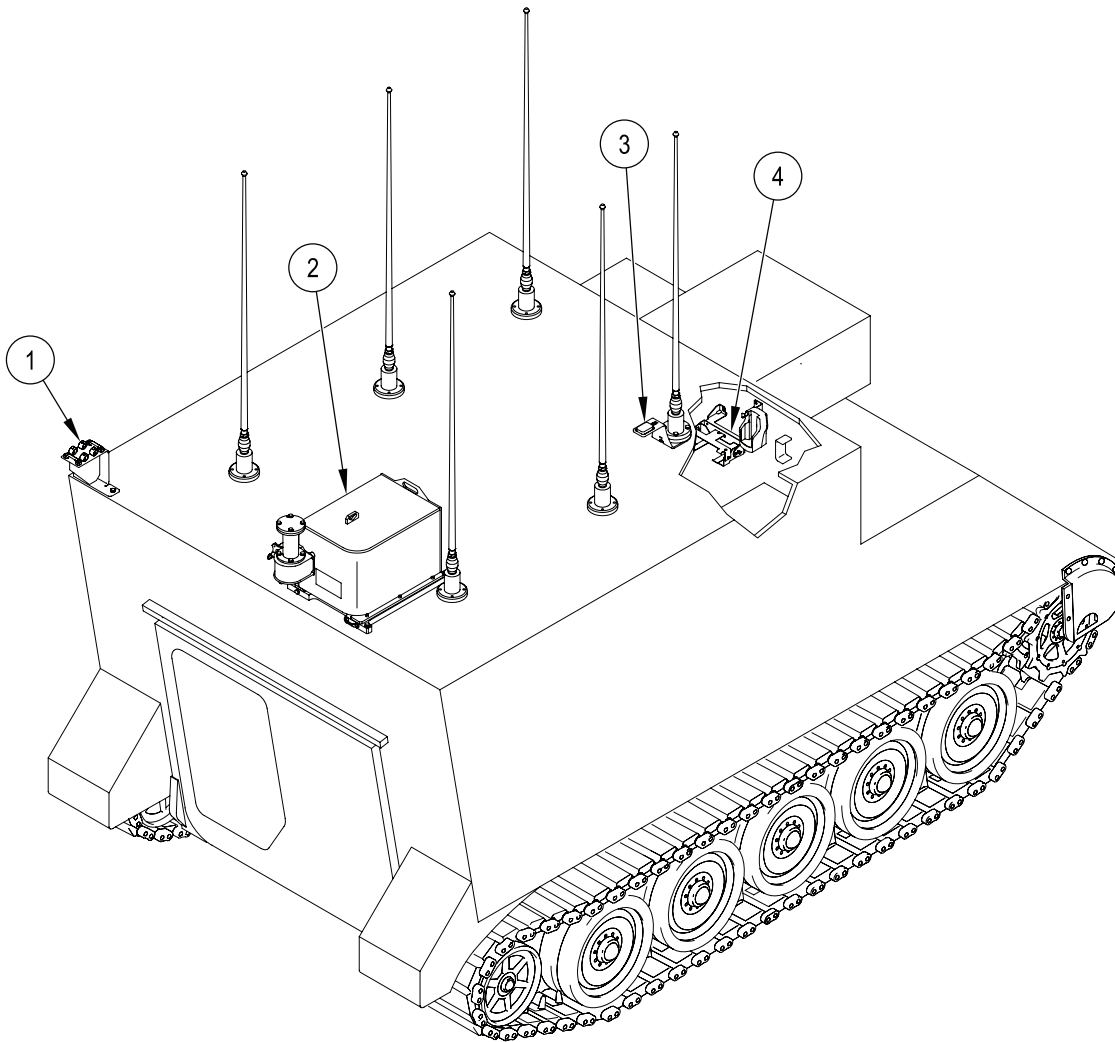


Figure 2. Location of CREW II Mounting Components

END OF WORK PACKAGE

CHAPTER 2 MAINTENANCE INSTRUCTIONS

WORK PACKAGE INDEX

<u>Title</u>	<u>Sequence No.</u>
REMOVAL PROCEDURES.....	0003 00
MODIFICATION PROCEDURES.....	0004 00
INSTALLATION PROCEDURES.....	0005 00

REMOVAL PROCEDURES**0003 00****THIS WORK PACKAGE COVERS:**

- Remove Intercom Unit (M1068A3 Only) (page 0003 00-1).
- Remove APU Controller Mounting Hardware (page 0003 00-2).
- Remove Extension Cover Tent Angle Bracket Mounting Hardware (page 0003 00-3).

INITIAL SETUP:Maintenance Level

Sustainment

Tools and Special Tools

General Mechanic's Tool Kit (WP 0011 00, Item 5)

Personnel Required

Mechanic

References

TM 9-2350-277-20

Equipment Conditions

Carrier parked on level ground

Engine stopped (TM 9-2350-277-10)

Vehicle blocked (TM 9-2350-277-10)

REMOVE INTERCOM UNIT (M1068A3 ONLY)

1. Disconnect battery ground strap. See TM 9-2350-277-20.
2. Remove intercom unit from right side of auxiliary power unit (APU) (6).
 - a. Disconnect communication harness (3) from intercom unit (5).
 - b. Remove two screws (4), four lockwashers (1), two locknuts (2), and intercom unit (5) from right side of APU controller (6). Discard hardware.

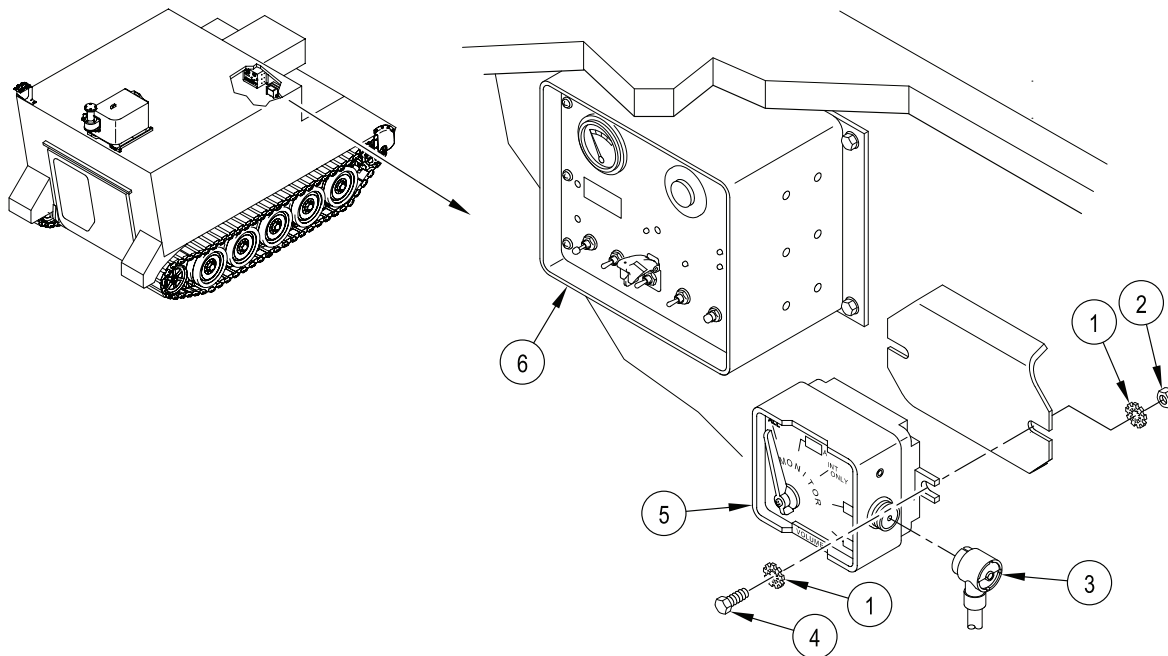


Figure 1. Intercom Unit Removal (M1068A3 Only)

REMOVE APU CONTROLLER MOUNTING HARDWARE

NOTE

**Do not remove APU controller. Only remove hardware as instructed.
For M577A3, do Step 1 only. For M1068A3, do Steps 1 and 2.**

1. Remove two screws (7), lockwashers (8), and flat washers (9) from the two lower APU controller (6) mounting positions. Discard hardware.
2. Remove screw (7), lockwasher (8), and flat washer (9) from upper right APU controller (6) mounting position. Discard hardware.

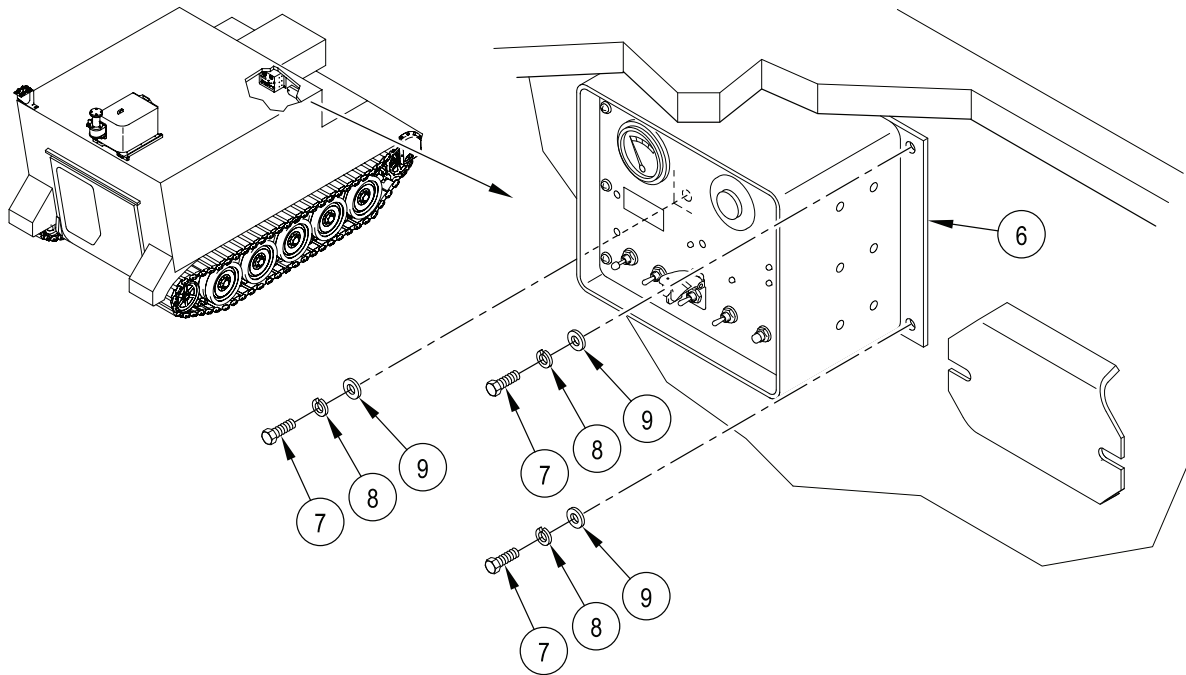


Figure 2. APU Controller Mounting Hardware Removal

REMOVE EXTENSION COVER TENT ANGLE BRACKET MOUNTING HARDWARE

1. Remove two screws (10) and flat washers (11) securing extension cover tent angle bracket to hull roof. Discard hardware.

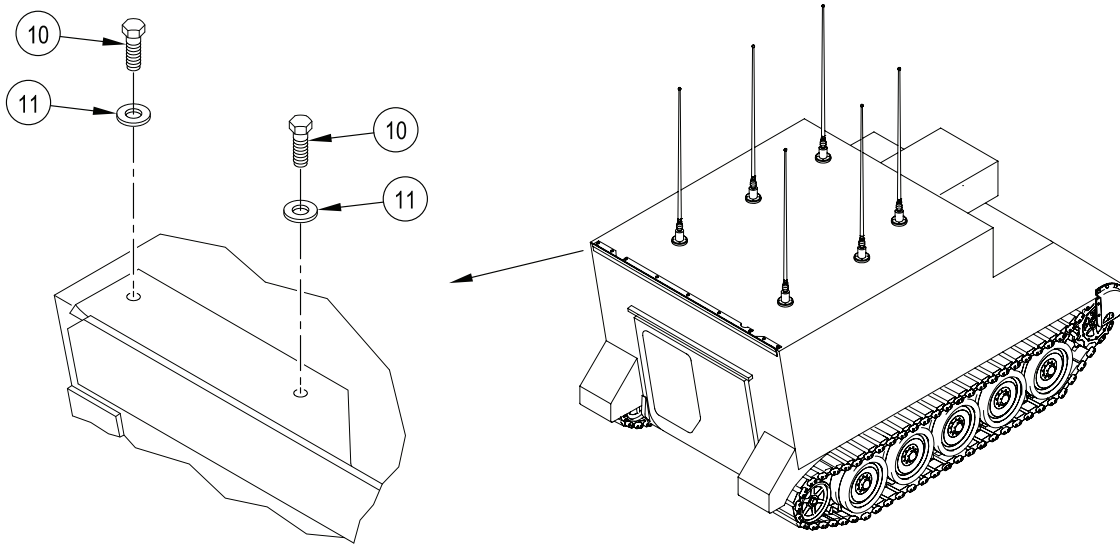


Figure 3. Extension Cover Tent Angle Bracket Mounting Hardware Removal

END OF WORK PACKAGE

MODIFICATION PROCEDURES

0004 00

THIS WORK PACKAGE COVERS:

- Clearance for CREW II Primary Unit (page 0004 00-1).
- Drill CREW II Cable Port (page 0004 00-3).
- Drill CREW II Primary Unit Enclosure Mounting (page 0004 00-5).
- Drill Intercom Unit Mounting (M1068A3 Only) (page 0004 00-6).
- Drill CREW II Hull Roof RCU and GPS Cable Clamp (page 0004 00-7).
- Drill CREW II Right Rail Support Bracket RCU and GPS Cable Clamps (page 0004 00-8).

INITIAL SETUP:

Maintenance Level

Sustainment

Tools and Special Tools

- Cutoff Saw, Air Powered (WP 0011, Item 1)
- Die and Tap Set, Thread Cutting (WP 0011 00, Item 2)
- Drilling Machine, Upright (WP 0011 00, Item 3)
- Drill Set, Twist (WP 0011 00, Item 4)
- General Mechanic's Tool Kit (WP 0011 00, Item 5)
- Goggles, Industrial (WP 0011 00, Item 6)
- Hole Saw Set, Carbide Tipped (WP 0011, Item 7)
- Magnetic Drill Base Plate/Template (WP 0012 00)
- Measuring Tape (WP 0011 00, Item 8)
- Portable Drill, Electric, 1/2 inch (WP 0011 00, Item 9)
- Sander, Disk, Electric, Portable (WP 0011 00, Item 10)

Materials/Parts

- Crew II Modification Kit (12498005)
- Wheel, Cutoff (WP 0013 00, Item 3)

Personnel Required

Mechanic

References

TM 43-0139

Equipment Conditions

- Carrier parked on level ground
- Engine stopped (TM 9-2350-277-10)
- Vehicle blocked (TM 9-2350-277-10)

CLEARANCE FOR CREW II PRIMARY UNIT

WARNING

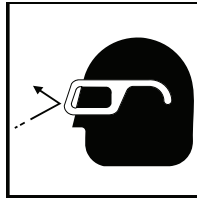


Flammable or explosive compounds can ignite and seriously injure or kill personnel. Remove and stow all flammable and explosive materials from vehicle and surrounding area.

CAUTION

Remove all equipment and gear from top right side rear area to prevent damage when drilling holes in upper hull.

WARNING



Metal chips and grinding dust can cause eye injury. Wear goggles and gloves.

1. Remove existing strap fastener loops (1) and (2) from top rear of hull roof. Grind welds flush and smooth.

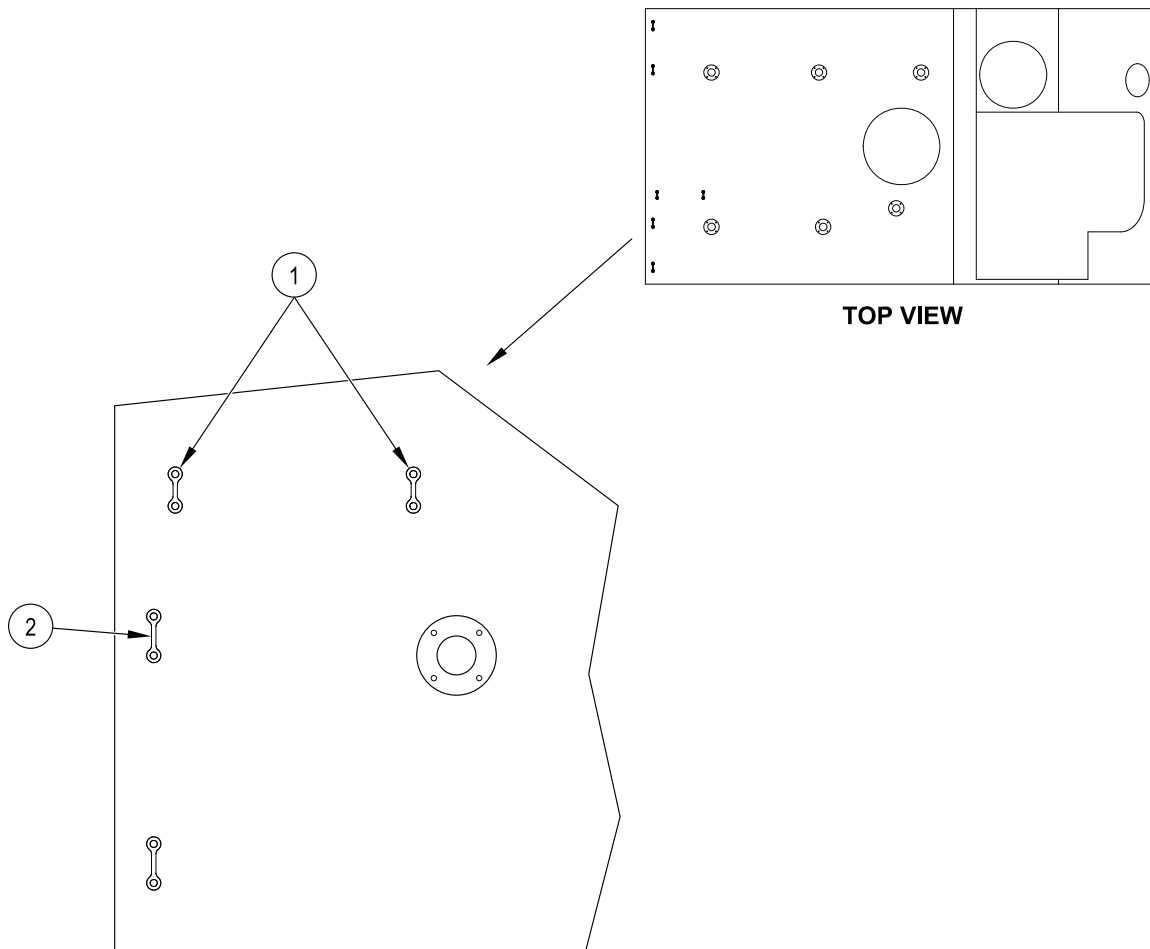
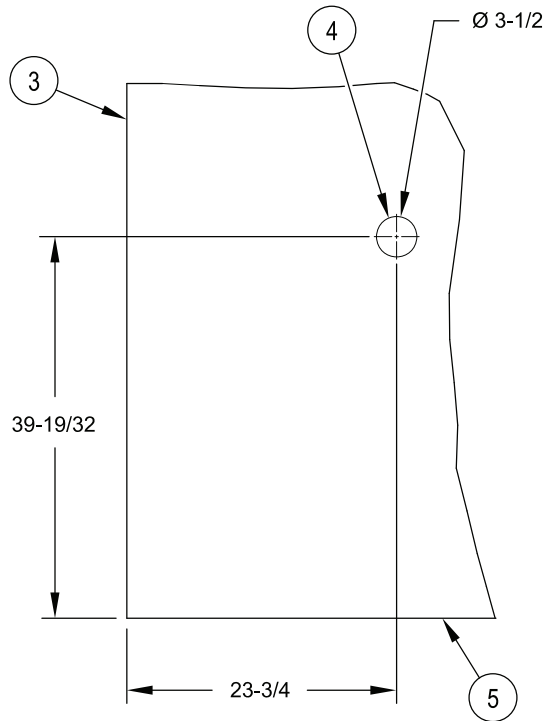


Figure 1. CREW II Primary Unit Clearance Provision

2. Paint each area to prevent corrosion. Reference TM 43-0139.

DRILL CREW II CABLE PORT

1. Locate and mark for center hole (4), measuring from right hull edge (5) $39\frac{19}{32}$ inches and $23\frac{3}{4}$ inches from rear hull edge (3).



NOTE: ALL DIMENSIONS ARE IN INCHES

Figure 2. Locate and Mark CREW II Cable Port

NOTE

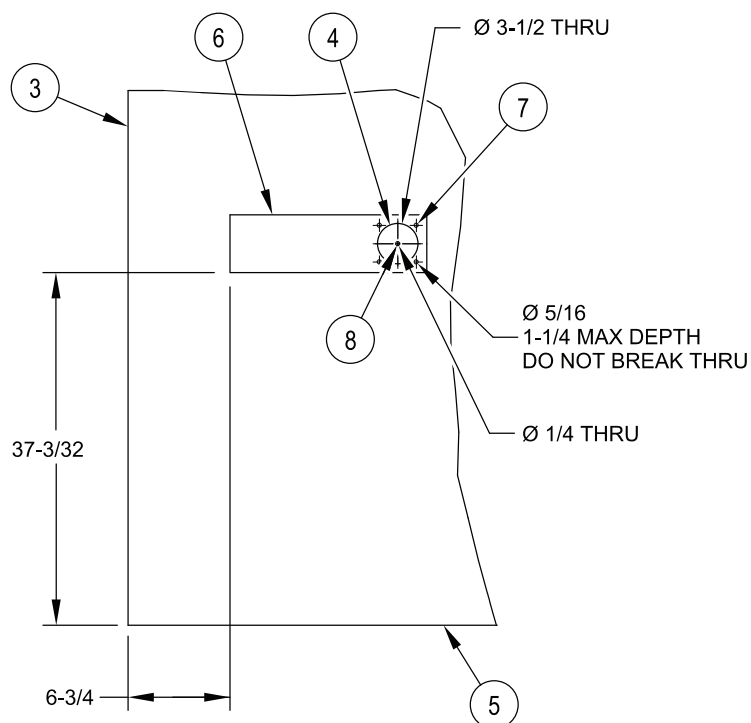
The 3-9/16 inch hole in the magnetic drill base plate/template must align with 3-1/2 inch hole previously marked on hull roof. Minor adjustments to position magnetic drill base plate/template may be necessary.

- Position magnetic drill base plate/template (6) on rear hull roof. Measure 6-3/4 inches from the rear edge of hull (3). Measure 37-3/32 inches from the right hull edge (5).

NOTE

The magnetic drill base plate/template is 1 inch thick. Marking the drill for a maximum depth of 2-1/4 inches will prevent any break thru.

- Drill four holes (7) using a 5/16 inch drill bit to a maximum depth of 1-1/4 inches. DO NOT BREAK THRU.
- Drill a pilot hole (8) using a 1/4 inch drill bit and magnetic drilling machine.
- Drill center hole (4) using a 3-1/2 inch saw drill bit and magnetic drilling machine.
- Tap four holes (7) using a 3/8 x 16 tap. Tap holes to a minimum depth of 7/8 inch.



NOTE: ALL DIMENSIONS ARE IN INCHES

Figure 3. Location for CREW II Cover Plate

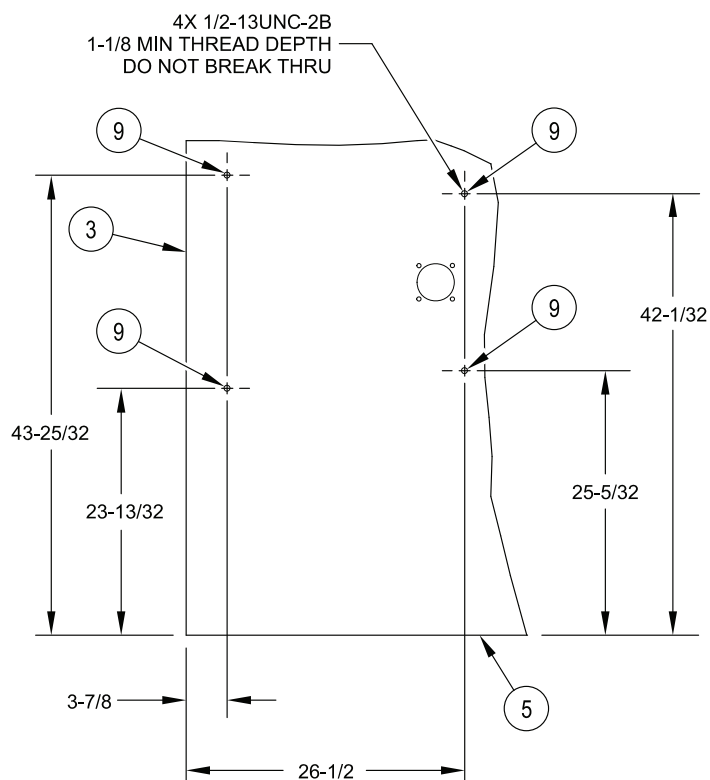
- Paint drilled area to prevent corrosion. Reference TM 43-0139.

DRILL CREW II PRIMARY UNIT ENCLOSURE MOUNTING

NOTE

To protect hull integrity, do not break thru hull when drilling. Marking the drill for a maximum depth of 1-1/4 inches will prevent any break thru.

1. Locate and mark four holes (9), measuring from right hull edge (5) and from rear hull edge (3).
2. Drill four holes (9) using a 27/64 inch drill bit to a maximum depth of 1-1/4 inches. DO NOT BREAK THRU.
3. Tap four holes (9) using a 1/2 x 13 tap. Tap holes to a minimum depth of 1-1/8 inch.



NOTE: ALL DIMENSIONS ARE IN INCHES

Figure 4. Location for CREW II Primary Unit Enclosure Mounting Bracket

4. Paint drilled area to prevent corrosion. Reference TM 43-0139.

DRILL INTERCOM UNIT MOUNTING (M1068A3 ONLY)

NOTE

To protect hull integrity, do not break thru hull when drilling. Marking the drill for a maximum depth of 1 inch will prevent any break thru.

1. Locate and mark two holes (10), measuring from right inside hull edge (12) and from rear edge (11) of horizontal sponson plate above engine bulkhead.
2. Drill two holes (10) using a 17/64 inch drill bit to a maximum depth of 1 inch. **DO NOT BREAK THRU.**
3. Tap two holes (10) using a 5/16 x 24 tap. Tap holes to a minimum depth of 3/4 inch.

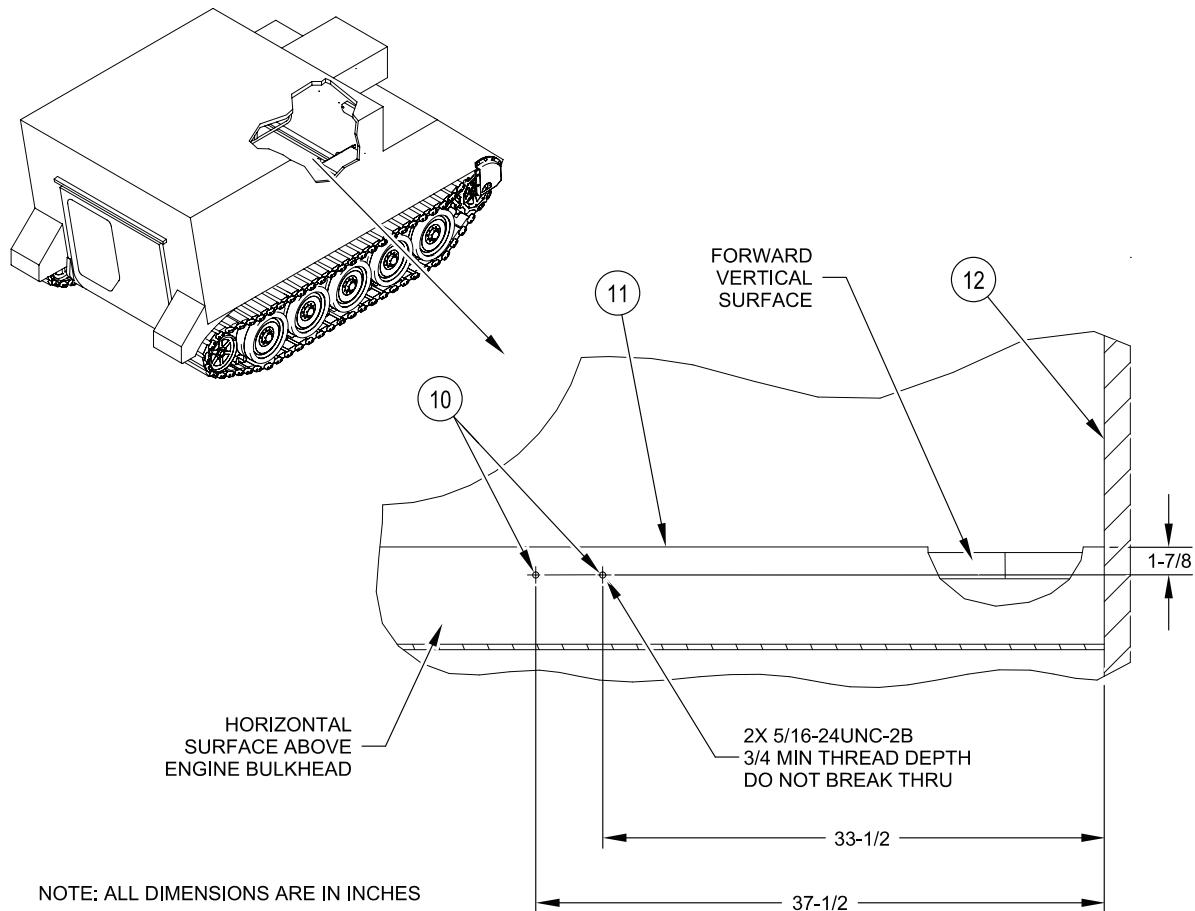


Figure 5. Location for Intercom Unit (M1068A3 Only)

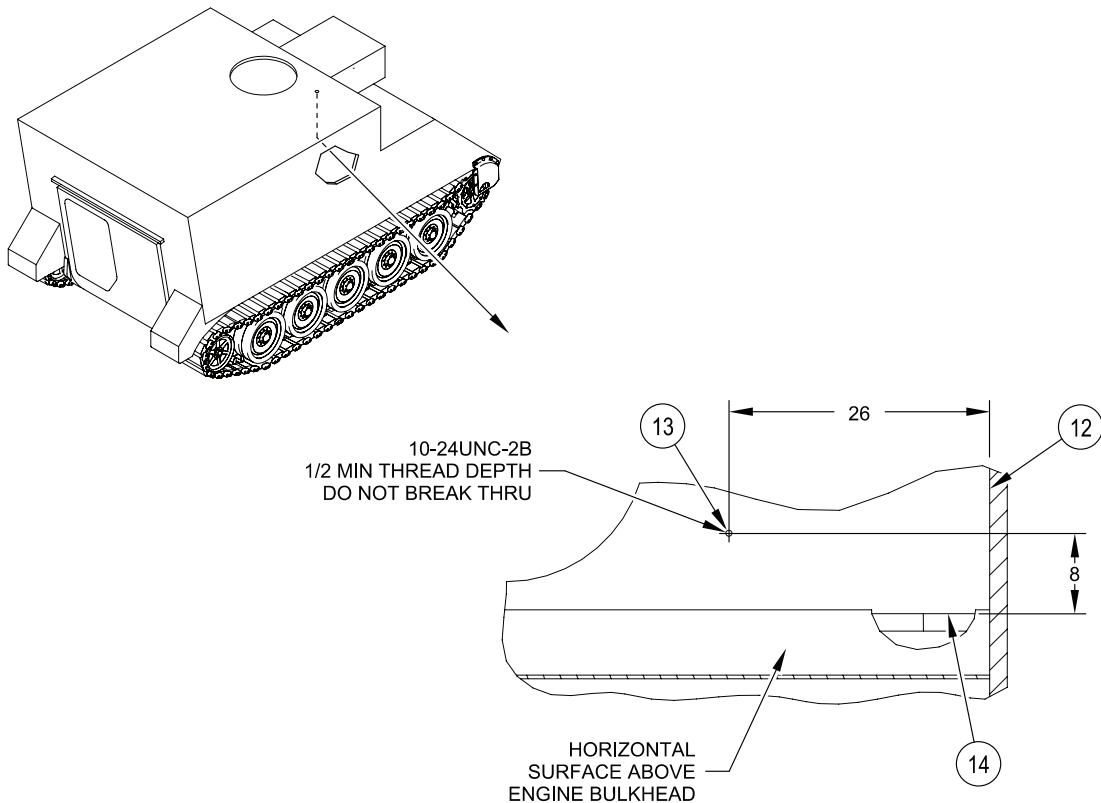
4. Paint drilled area to prevent corrosion. Reference TM 43-0139.

DRILL CREW II HULL ROOF RCU AND GPS CABLE CLAMP

NOTE

To protect hull integrity, do not break thru hull when drilling. Marking the drill for a maximum depth of 5/8 inch will prevent any break thru.

1. Locate and mark for hole (13), measuring from right inside hull edge (12) and from front hull edge (14) above engine bulkhead.
2. Drill a hole (13) using a 3/16 inch drill bit to a maximum depth of 5/8 inch. DO NOT BREAK THRU.
3. Tap hole (13) using a 10-24 tap. Tap hole to a minimum depth of 1/2 inch.



NOTE: ALL DIMENSIONS ARE IN INCHES

Figure 6. Location for CREW II Hull Roof RCU and GPS Cable Clamp

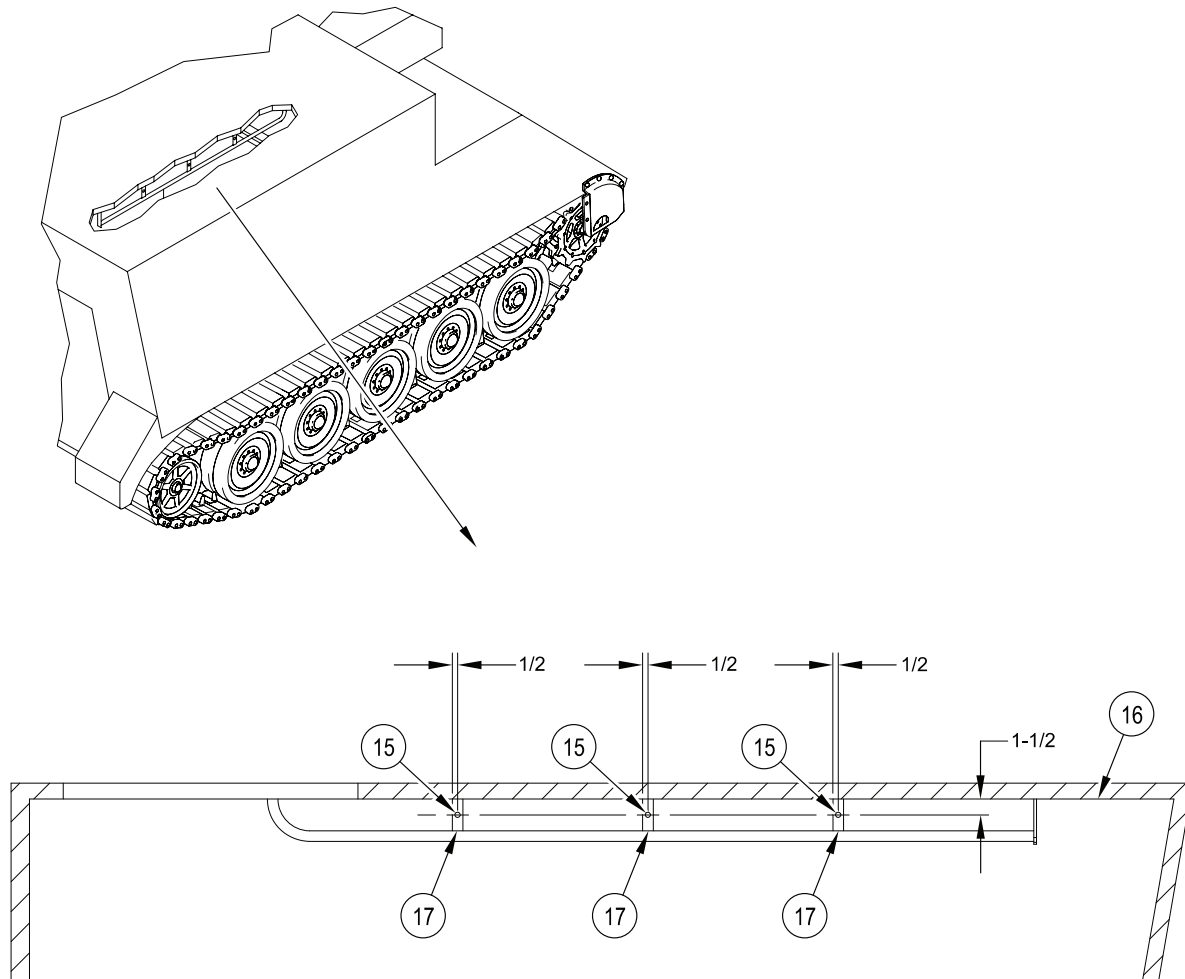
4. Paint drilled area to prevent corrosion. Reference TM 43-0139.

DRILL CREW II RIGHT RAIL SUPPORT BRACKET RCU AND GPS CABLE CLAMPS

NOTE

Drill thru support brackets.

1. Locate and mark three holes (15) on right rail support brackets, measuring 1-1/2 inches down from inside hull roof (16) on each support bracket (17).
2. Drill a hole (15), using a 1/4 inch drill bit, thru each of the three support brackets (17).



NOTE: ALL DIMENSIONS ARE IN INCHES

Figure 7. Location for CREW II Right Rail Support Bracket RCU and GPS Cable Clamps

3. Paint drilled area to prevent corrosion. Reference TM 43-0139.

END OF WORK PACKAGE

INSTALLATION PROCEDURES**0005 00****THIS WORK PACKAGE COVERS:**

- Install GPS Kit (page 0005 00-1).
- Install GPS Antenna Stowage Bracket (page 0005 00-8).
- Install Cable Port and Primary Unit Enclosure (page 0005 00-9).
- Install Intercom Unit/Mounting Bracket (M1068A3 Only) (page 0005 00-13).
- Install RCU/PDA Bracket Assembly (M1068A3 Only) (page 0005 00-14).
- Install RCU/PDA Bracket Assembly (M577A3 Only) (page 0005 00-16).
- Install RCU Cable, GPS Cable, and Power Harness Clamps (page 0005 00-18).
- Install RCU Cable, GPS Cable, Power Harness, and RCU to PDA Cable (page 0005 00-20).

INITIAL SETUP:Maintenance Level

Sustainment

Personnel Required

Mechanic

Helper (H)

Tools and Special Tools

General Mechanic's Tool Kit (WP 0011 00, Item 5)

Measuring Tape (WP 0011 00, Item 8)

Sling , Endless (WP 0011 00, Item 11)

Wrench, Torque (WP 0011, Item 12)

Equipment Conditions

Carrier parked on level ground

Engine stopped (TM 9-2350-277-10)

Vehicle blocked (TM 9-2350-277-10)

Materials/Parts

Cleaning Compound (WP 0013 00, Item 1)

Crew II Modification Kit (12498005)

INSTALL GPS KIT**NOTE**

If the carrier has a SINCGARS antenna mounted, do Steps 1 and 2. If carrier has no antenna, go to Step 3.

1. Remove SINCGARS antenna from vehicle.
 - a. Remove bolt (6), two lockwashers (5), and ground strap (8) from inside vehicle. Retain hardware for re-installation after modification.
 - b. Disconnect cable (7) from antenna base (3).
 - c. Remove four screws (2), lockwashers (1), antenna base (3), and gasket (4) from vehicle. Discard screws and gasket. Retain antenna base and lockwashers for re-installation after modification.
2. Scrape any remaining gasket material from mating surface. Clean with cleaning compound.

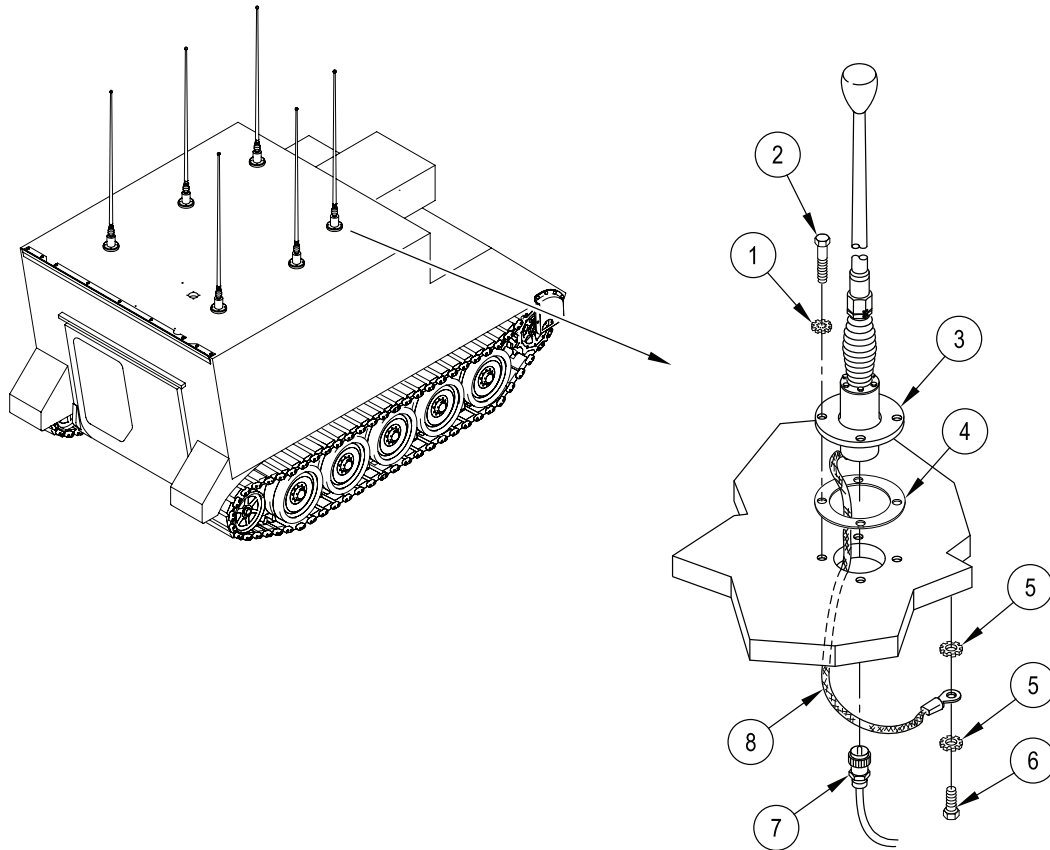


Figure 1. SINCGARS Antenna Removal

3. Remove antenna cover from vehicle.
 - a. Remove four screws (9), cover (10), and gasket (11) from antenna mounting location. Discard screws and gasket. Retain cover for re-installation after modification.
 - b. Scrape any remaining gasket material from mating surface. Clean with cleaning compound.

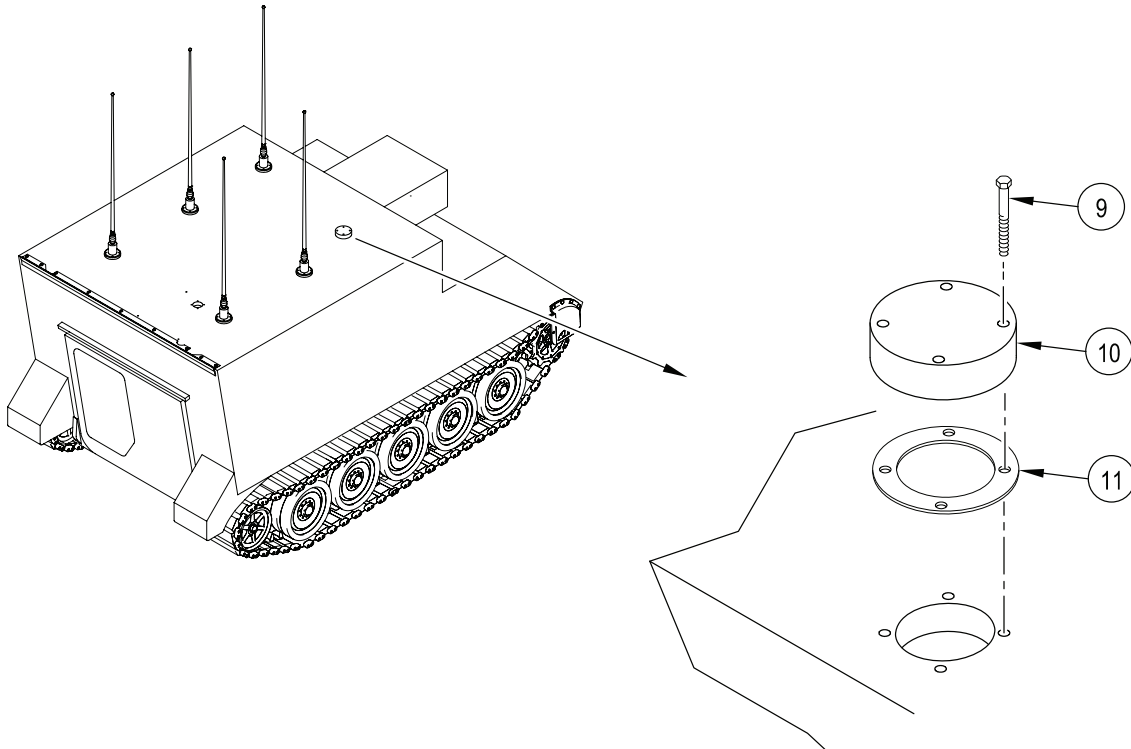


Figure 2. Antenna Cover Removal

4. Install GPS sensor, mounting bracket, and cable on vehicle.
 - a. Route GPS cable (13) through antenna opening, new gasket (15), and GPS mounting bracket (14).
 - b. Connect GPS cable (13) to GPS sensor (12).
 - c. Install GPS sensor (12) on GPS mounting bracket (14) and secure with two screws (17).
 - d. Secure GPS cable (13) to GPS mounting bracket (14) with three tie straps (16).
 - e. Position gasket (15) and GPS mounting bracket (14) over antenna opening.

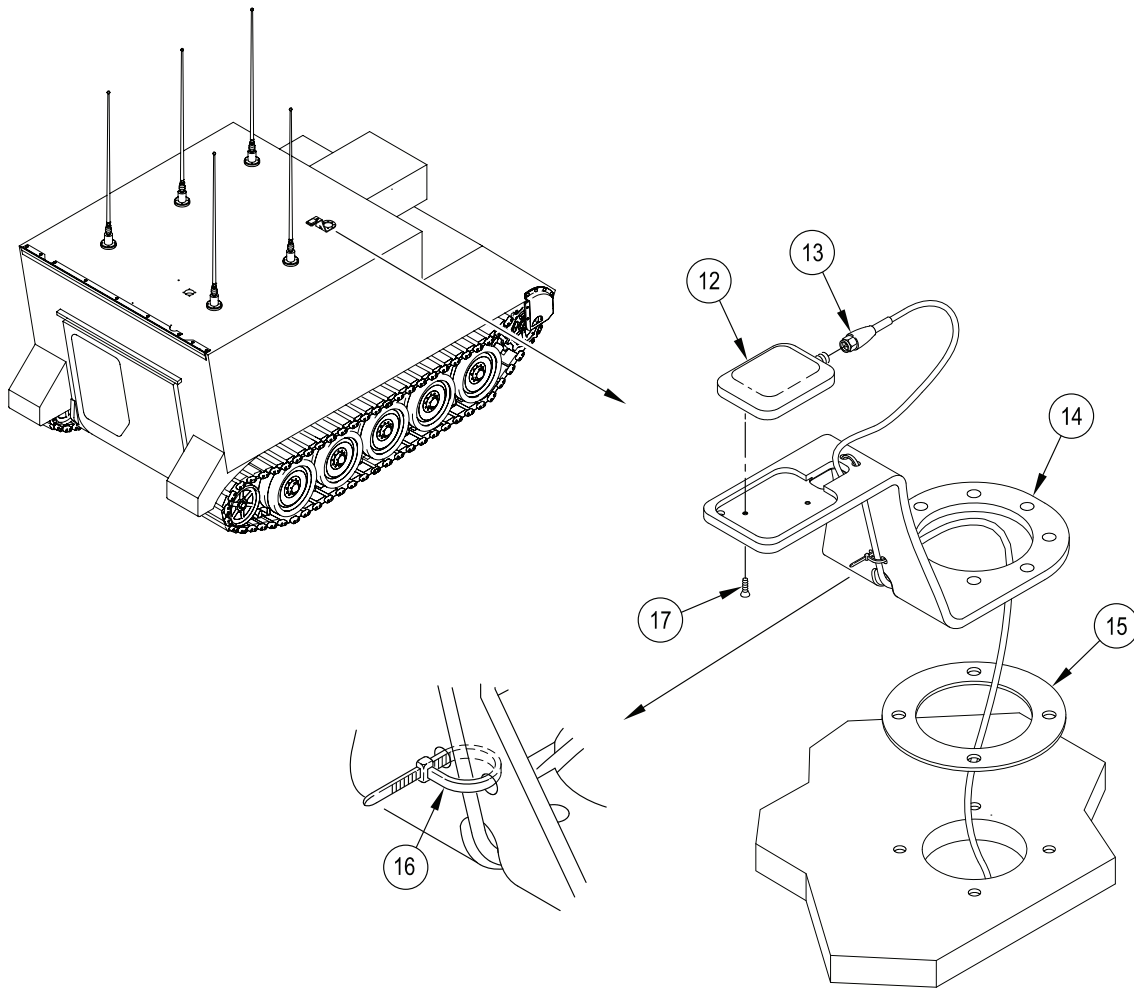
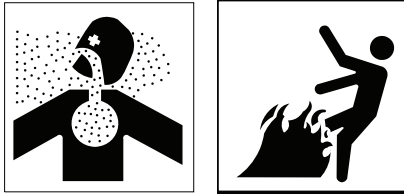


Figure 3. GPS Sensor, Mounting Bracket, and Cable Installation

WARNING

Adhesive, primer, sealant compounds, and isopropyl alcohol are toxic and flammable. These compounds are toxic to eyes, skin, and respiratory tract. Continued exposure can make you dizzy and irritate your eyes and throat.

Always use in well ventilated areas, away from heat, sparks, and flames. Do not breathe fumes. Do not allow into contact with skin and eyes. Use goggles or face shield and protective gloves.

5. Apply adhesive over GPS cable (13) to seal out water.

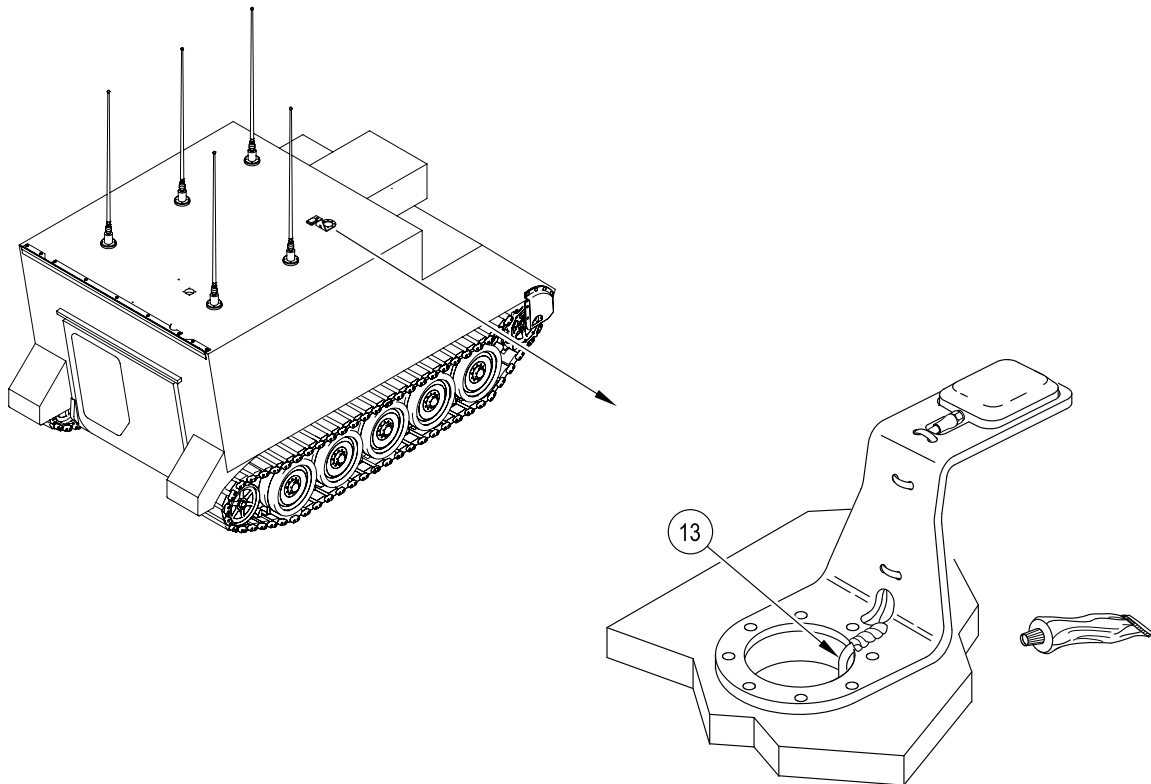


Figure 4. GPS Cable Sealant Application

6. Install new gasket (15) on GPS mounting bracket (14).

NOTE

If SINCGARS antenna was previously mounted, do Step 7. If carrier had no antenna, go to Step 8.

7. Install SINCGARS antenna on vehicle.
 - a. Reroute antenna cable (7) inside vehicle and through antenna opening, GPS mounting bracket (14), and gasket (15). Connect antenna cable (7) to antenna base (3).

NOTE

SINCGARS antenna requires four screws (P/N B1821BH038C175N).

- b. Install SINCGARS antenna base (3) over gasket (15), GPS mounting bracket (14), and antenna opening. Secure with four screws (18) and retained lockwashers (1). TORQUE SCREWS TO 44 LB-FT (59.6 N·m).
- c. Connect ground strap (8) to vehicle hull and secure with retained bolt (6) and two lockwashers (5).

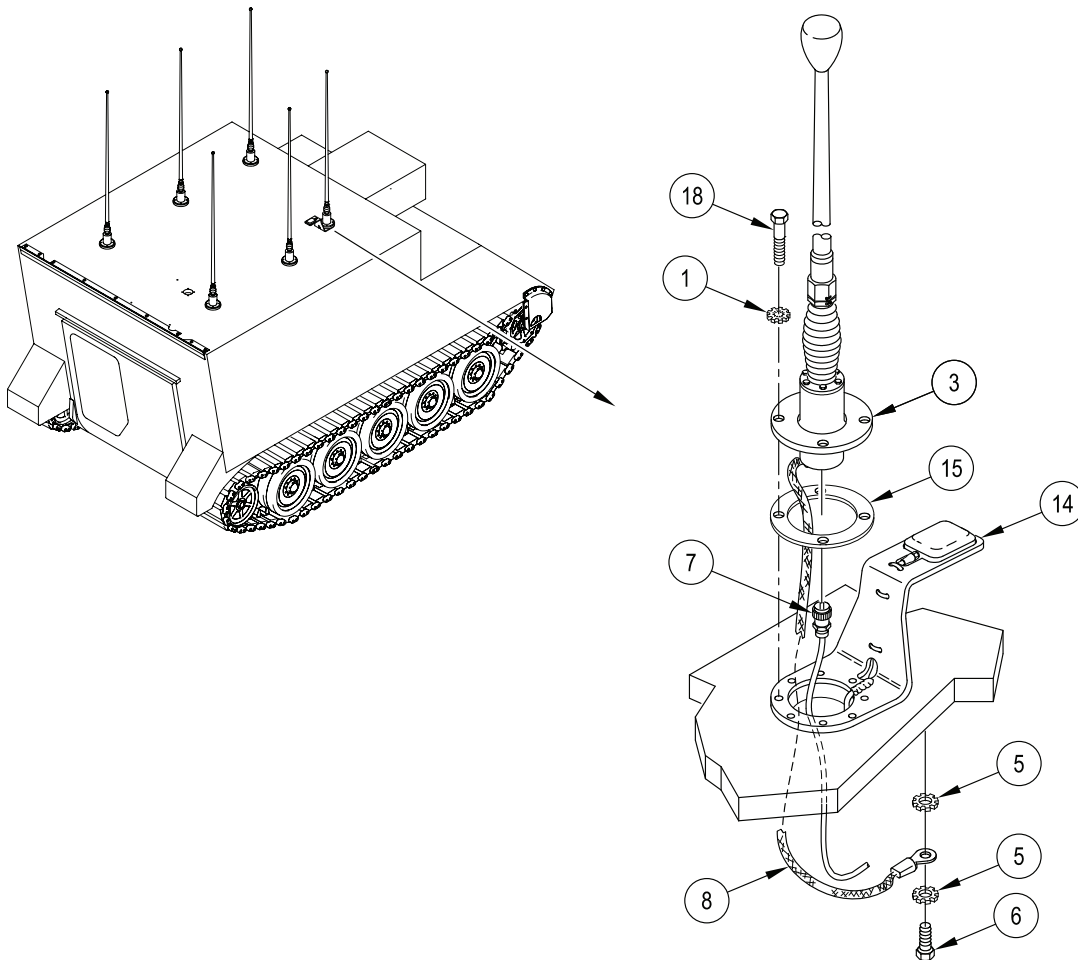


Figure 5. SINCGARS Antenna Installation

8. Install new gasket (15) on GPS mounting bracket (14).

NOTE

Remove and discard mounting plate provided in GPS mounting kit (P/N 35095).

9. Install antenna cover on vehicle.

NOTE

Antenna cover requires four screws (P/N B1821BH038C275N).

- a. Install antenna cover (10) over gasket (15), GPS mounting bracket (14), and antenna opening. Secure with four screws (19). TORQUE SCREWS TO 44 LB-FT (59.6 N-m).

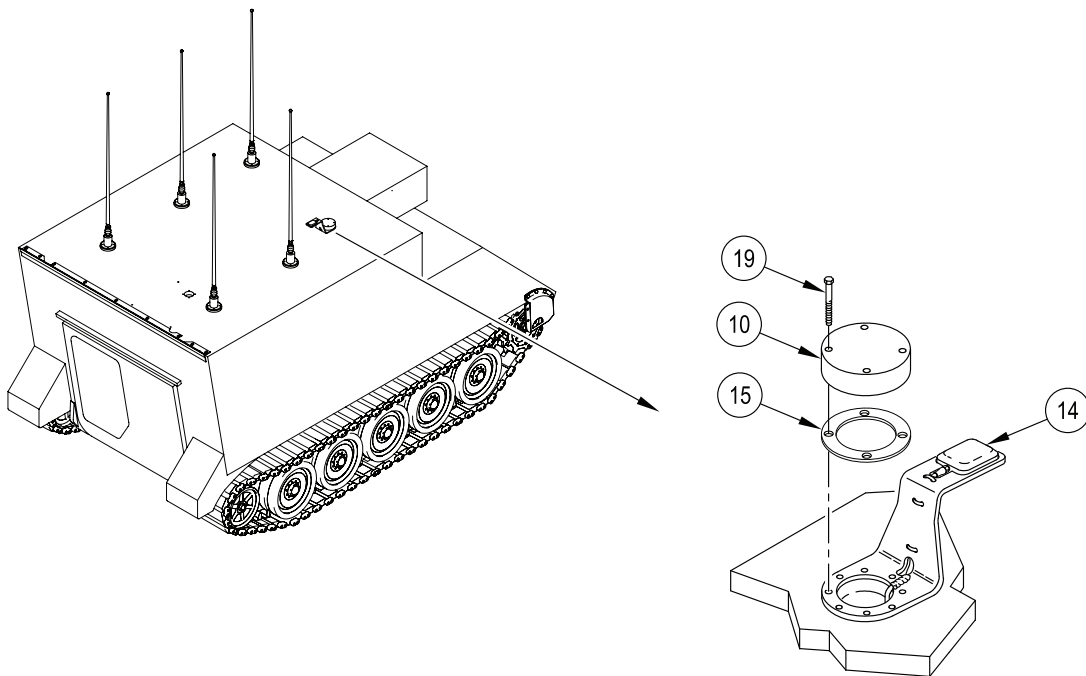


Figure 6. Antenna Cover Installation

INSTALL GPS ANTENNA STOWAGE BRACKET

1. Install antenna stowage bracket (23) on extension cover tent angle bracket. Secure with two screws (21) and flat washers (22). TORQUE SCREWS TO 44 LB-FT (59.6 N·m).
2. Install and secure webbing strap (20) to antenna stowage bracket (23).

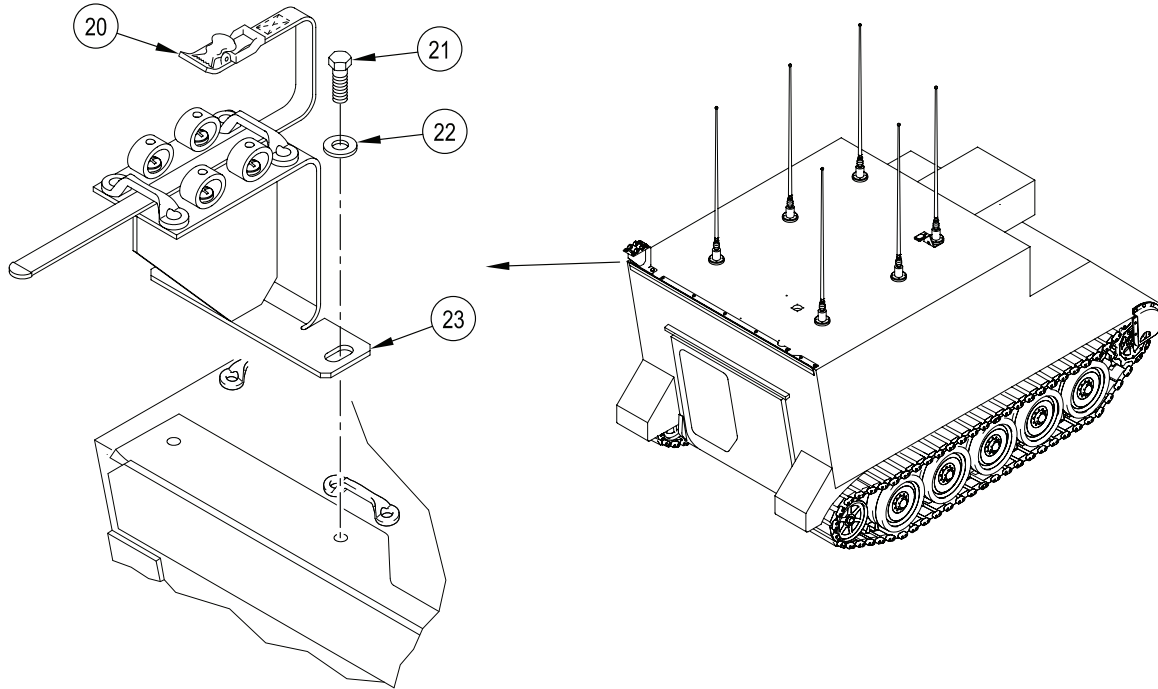


Figure 7. CREW II Antenna Stowage Bracket Installation

INSTALL CABLE PORT AND PRIMARY UNIT ENCLOSURE

NOTE

Do not tighten cover plate screws until establishing the cable lengths necessary to attach to their connecting components.

1. Position new gasket (15) over cable port opening.
2. Route GPS cable (13) up through cable port opening. Have helper assist.
3. Route RCU cable (29) and power harness (28) down through cable port opening.
4. Install cover plate (27) over gasket (15) and cable port opening. Secure with a screw (18) and flat washer (25).
5. Install ground strap (24) on cover plate (27). Secure with a screw (18) and flat washer (25).
6. Measure and pull GPS cable (13) to extend 10 inches beyond top of cover plate (27) to primary unit location.
7. Measure and pull RCU cable (29) and power harness (28) to extend 25 inches beyond top of cover plate (27) to primary unit location.
8. Position cables and harness in appropriate indentations. Install cover plate (26) over gasket (15) and cable port opening. Secure with two screws (18) and flat washers (25).
9. Tighten four screws (18). TORQUE SCREWS TO 44 LB-FT (59.6 N·m).

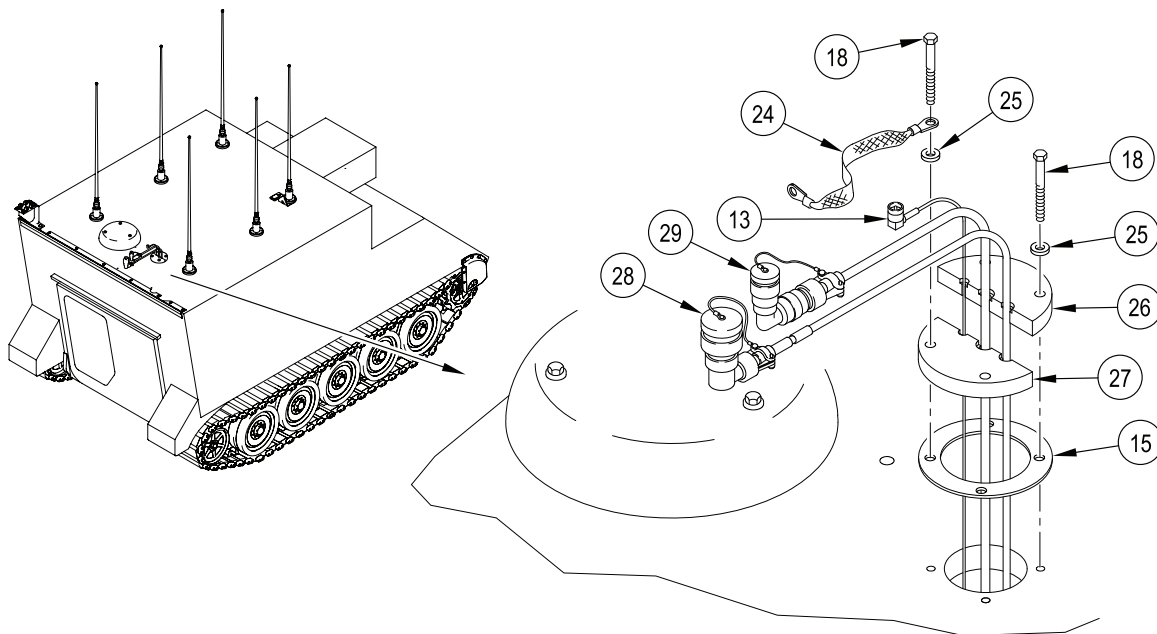
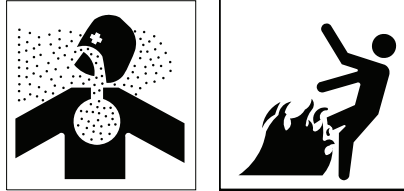


Figure 8. Cable Port Installation

WARNING

Adhesive, primer, sealant compounds, and isopropyl alcohol are toxic and flammable. These compounds are toxic to eyes, skin, and respiratory tract. Continued exposure can make you dizzy and irritate your eyes and throat.

Always use in well ventilated areas, away from heat, sparks, and flames. Do not breathe fumes. Do not allow into contact with skin and eyes. Use goggles or face shield and protective gloves.

10. Apply adhesive around GPS cable (13), RCU cable (29), power harness (28), and groove between cover plates (26 and 27) to seal out water.

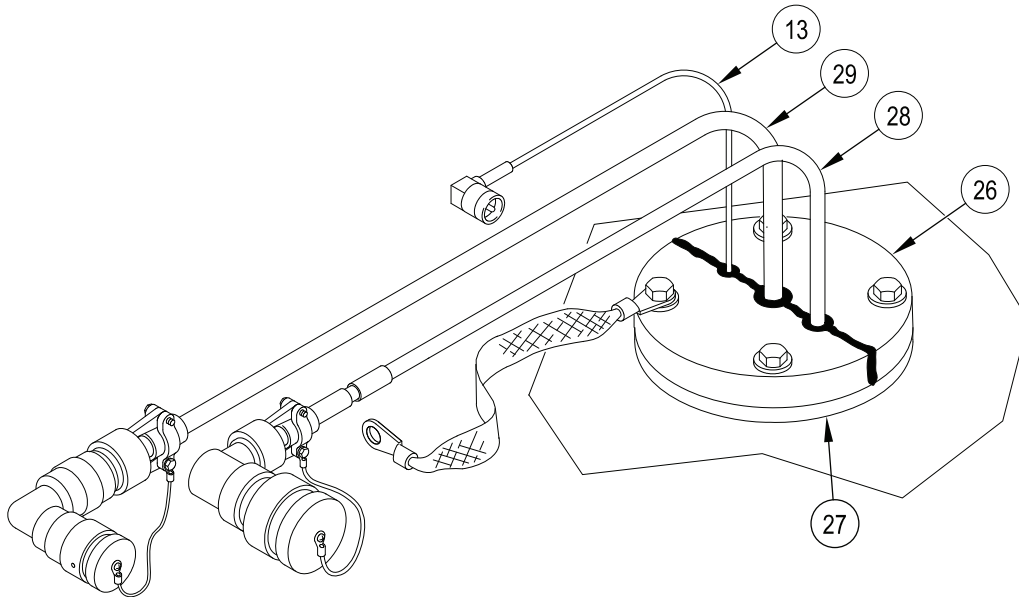


Figure 9. Cable Port Sealant Application

WARNING

Hanging loads, heavy parts, and overhead equipment can fall unexpectedly. Falling loads can kill or seriously injure personnel.

Keep away from hanging loads, heavy parts, and overhead equipment. Use correct lifting devices to move hanging loads and heavy parts. Always have a helper guide you. Keep your hands and feet out of confined spaces from which heavy loads are being installed or removed.

11. Attach an endless sling (31) to primary unit enclosure assembly (30) lifting eye. Attach sling to lifting device of at least 300 lbs capacity.
12. Position primary unit enclosure assembly (30) on rear of vehicle with the open end of the enclosure facing the front of the vehicle. Have helper assist.
13. Secure primary unit enclosure assembly (30) to vehicle hull with four screws (32) and flat washers (33). TORQUE SCREWS TO 105 LB-FT (142.4 N·m).

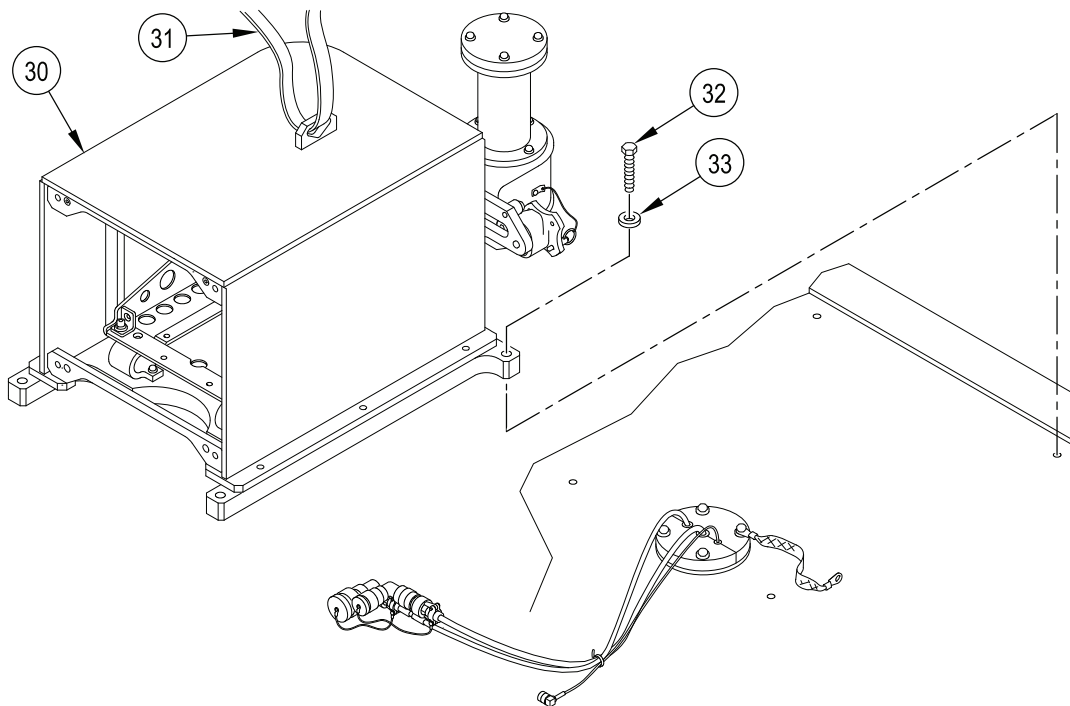


Figure 10. Primary Unit Enclosure Assembly Installation

14. Remove endless sling (31) from primary unit enclosure assembly (30) lifting eye.
15. Place cables and ground strap inside primary unit enclosure assembly (30).
16. Secure GPS cable, RCU cable, and power harness to primary unit mounting bracket (34) with tie straps (16).
17. Install enclosure cover (35) on primary unit enclosure assembly (30). Secure with four screws (36) and flat washers (33).

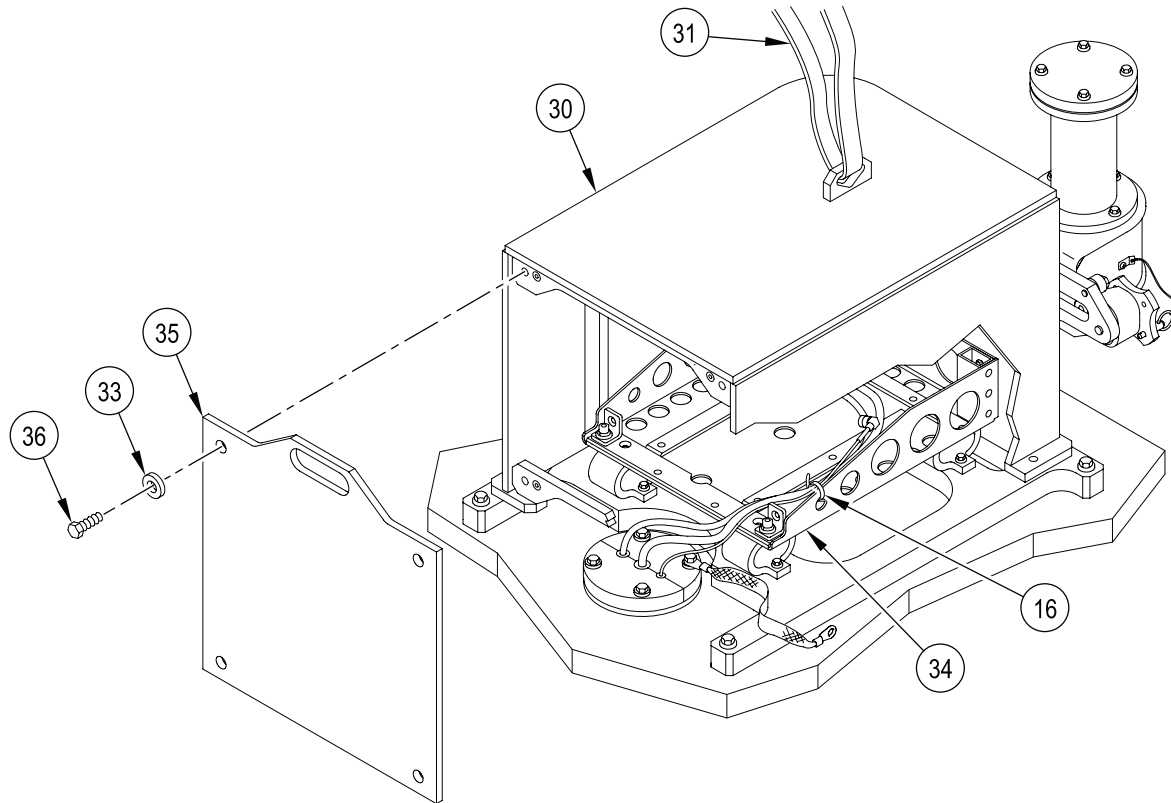


Figure 11. Primary Unit Enclosure Cover Installation

INSTALL INTERCOM UNIT/MOUNTING BRACKET (M1068A3 ONLY)

1. Install intercom mounting bracket (37) over drilled holes under horizontal sponson. Secure with two screws (39) and lockwashers (38). TORQUE SCREWS TO 24 LB-FT (32.5 N·m).
2. Install intercom unit (40) to intercom mounting bracket (37). Secure with two screws (39) and lockwashers (38). TORQUE SCREWS TO 24 LB-FT (32.5 N·m).

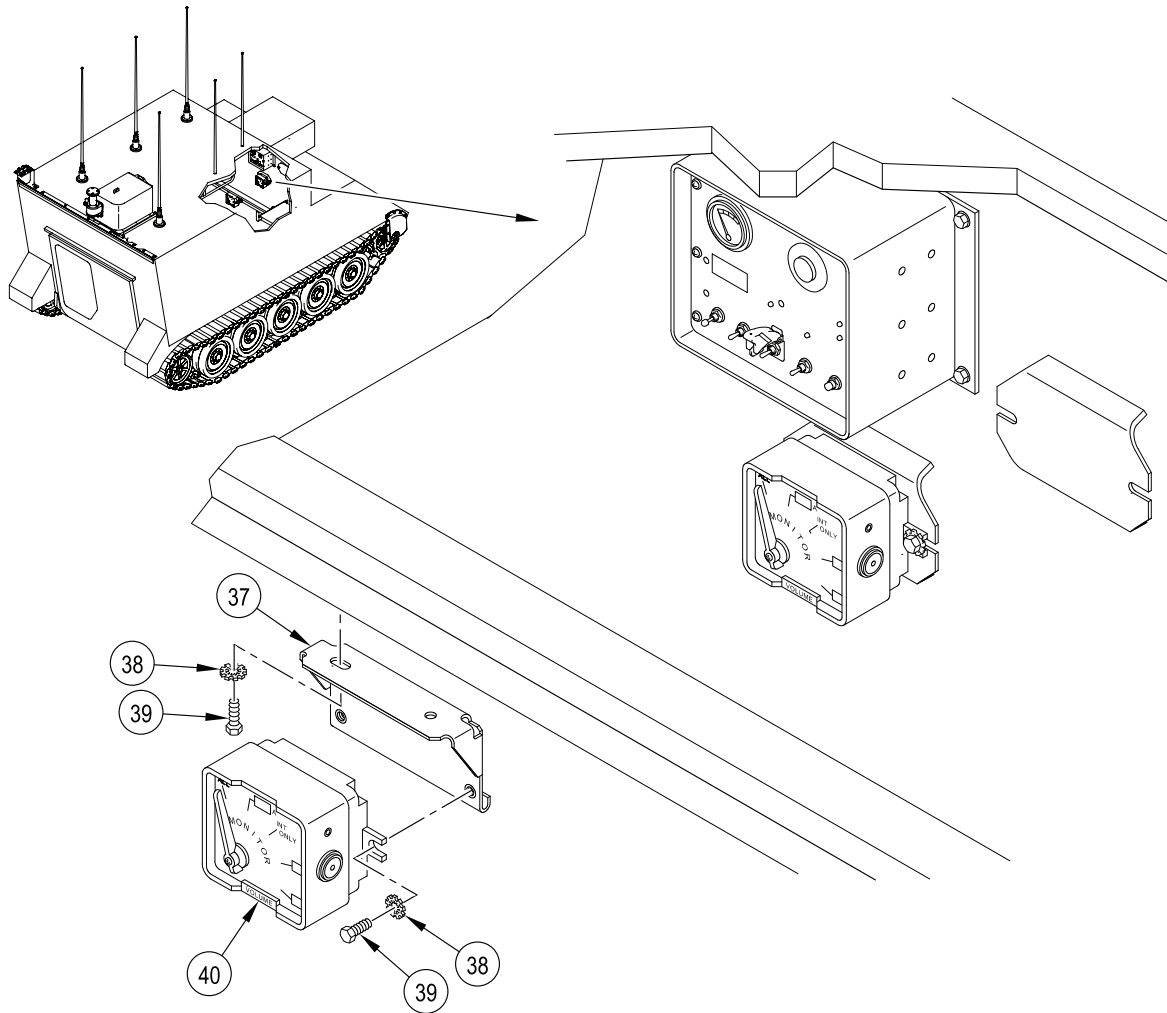


Figure 12. Intercom Unit/Mounting Bracket Installation

INSTALL RCU/PDA BRACKET ASSEMBLY (M1068A3 ONLY)

1. Install PDA cradle and RCU bracket to RCU/PDA bracket.

NOTE

**A clamp is to be installed on the lower right stud of the PDA cradle.
Do not tighten hardware securing clamp until cable routing has been completed.**

- a. Install PDA cradle (48) and clamp (47) on RCU/PDA bracket (43). Secure with four flat washers (45) and self-locking nuts (46).
- b. Install RCU bracket (41) on RCU/PDA bracket (43). Secure with four screws (42) and self-locking nuts (44).

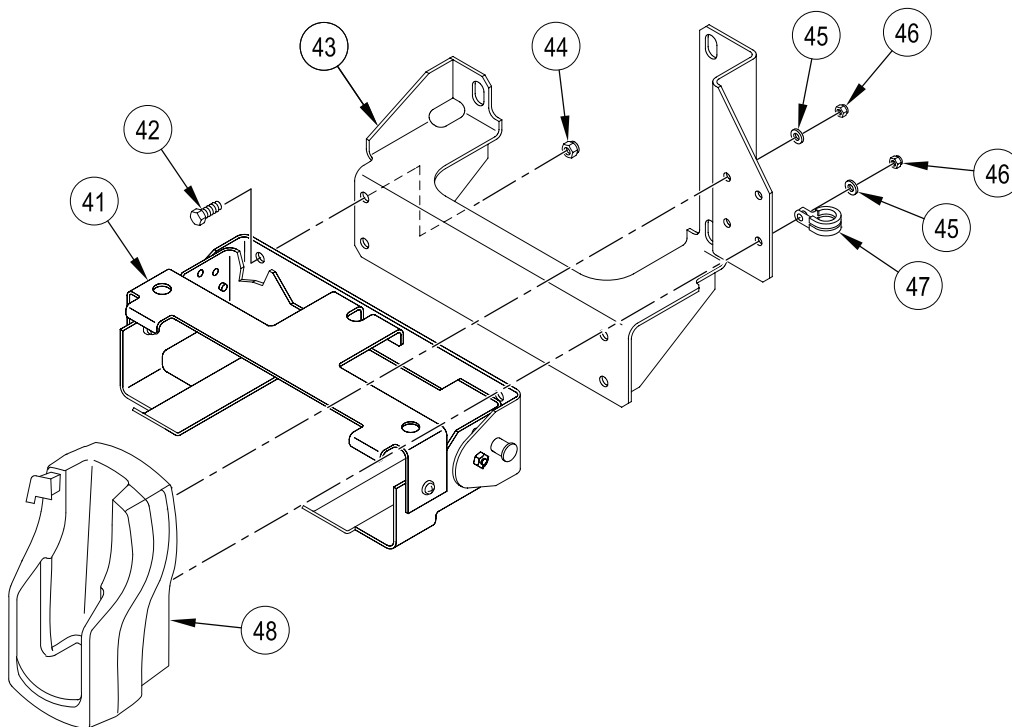


Figure 13. RCU/PDA Bracket Assembly (M1068A3 Only)

2. Install RCU/PDA bracket assembly to APU controller.

NOTE

A clamp is to be installed on the lower right screw of the RCU/PDA bracket assembly. Do not tighten screw securing clamp until cable routing has been completed.

- a. Install RCU/PDA bracket assembly (52) to APU controller (53). Secure with two screws (49), lockwashers (50), and flat washers (51).
- b. Install clamp (54) to RCU/PDA bracket assembly (52) and APU controller (53). Secure with screw (49) and lockwasher (50).

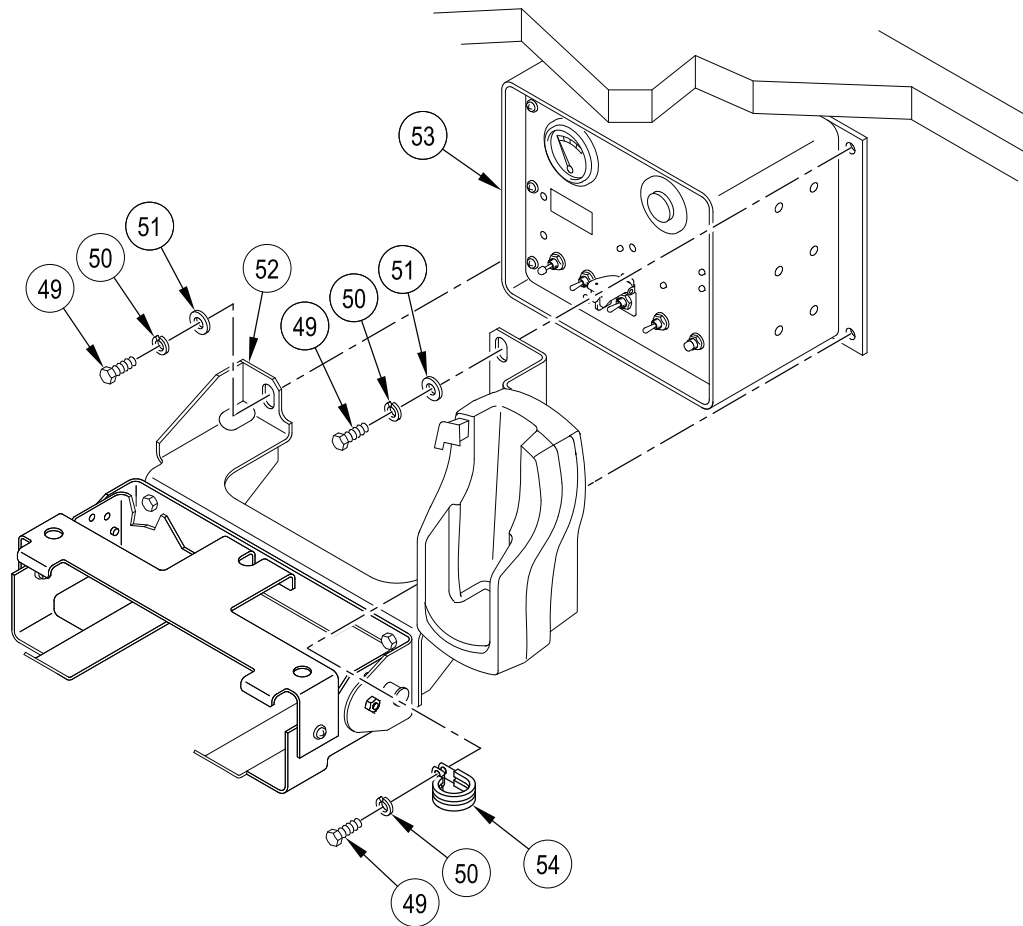


Figure 14. RCU/PDA Bracket Assembly Installation (M1068A3 Only)

INSTALL RCU/PDA BRACKET ASSEMBLY (M577A3 ONLY)

1. Install PDA cradle and RCU bracket to RCU/PDA bracket.
 - a. Install PDA cradle (48) on RCU/PDA bracket (55). Secure with four flat washers (45) and self-locking nuts (46).
 - b. Install RCU bracket (41) on RCU/PDA bracket (55). Secure with four screws (42) and self-locking nuts (44).

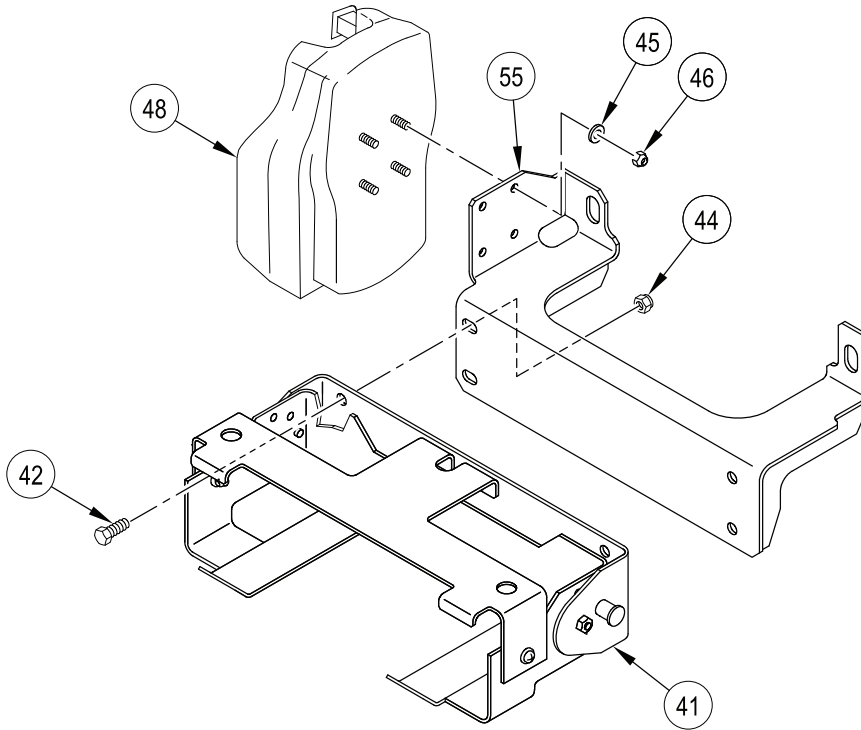


Figure 15. RCU/PDA Bracket Assembly (M577A3 Only)

2. Install RCU/PDA bracket assembly to APU controller.

NOTE

A clamp is to be installed on the right screw of the RCU/PDA bracket assembly. Do not tighten screw securing clamp until cable routing has been completed.

- a. Install RCU/PDA bracket assembly (56) to APU controller (53). Secure with screw (49), lockwasher (50), and flat washer (51).
- b. Install clamp (54) to RCU/PDA bracket assembly (56) and APU controller (53). Secure with screw (49), lockwasher (50), and flat washer (51).

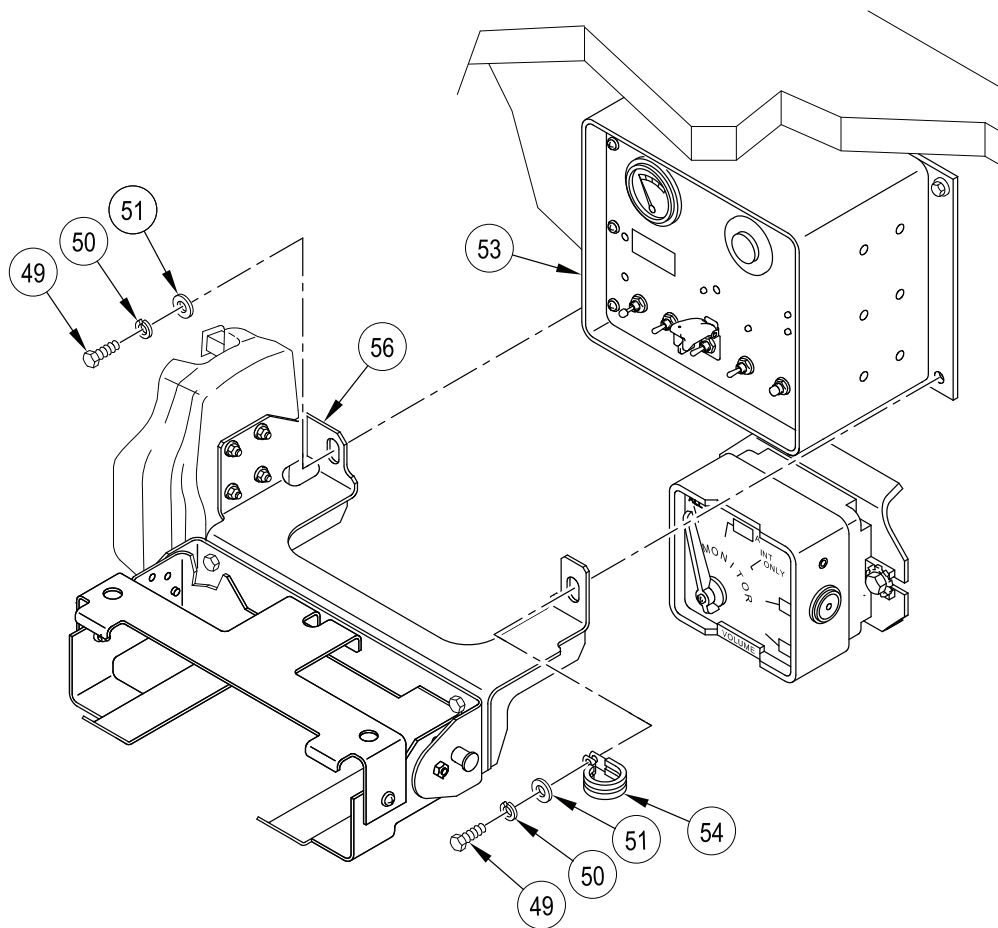


Figure 16. RCU/PDA Bracket Assembly Installation (M577A3 Only)

INSTALL RCU CABLE, GPS CABLE AND POWER HARNESS CLAMPS**NOTE**

Do not tighten cable clamps until establishing the cable lengths necessary to attach to their connecting components.

1. Install clamp (61) to interior of hull roof. Secure with screw (39) and lockwasher (62).
2. Install three clamps (60) to right rail support brackets. Secure with three screws (59), flat washers (58), and self-locking nuts (57).

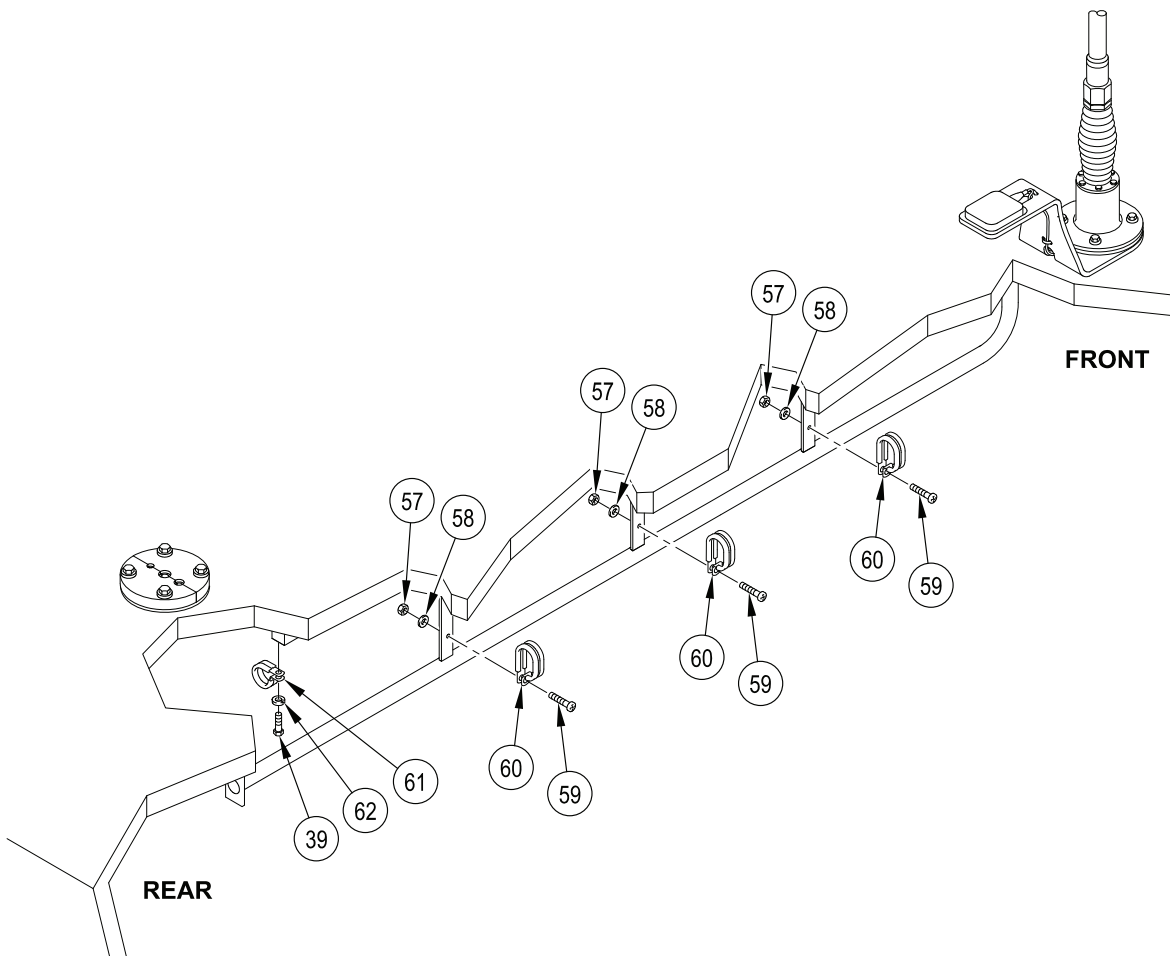


Figure 17. RCU Cable, GPS Cable, and Power Harness Clamps Installation

3. Install clamp (61) to interior of hull roof. Secure with screw (39) and lockwasher (62).
4. Install clamp (60) to interior of hull roof. Secure with screw (59) and lockwasher (63).

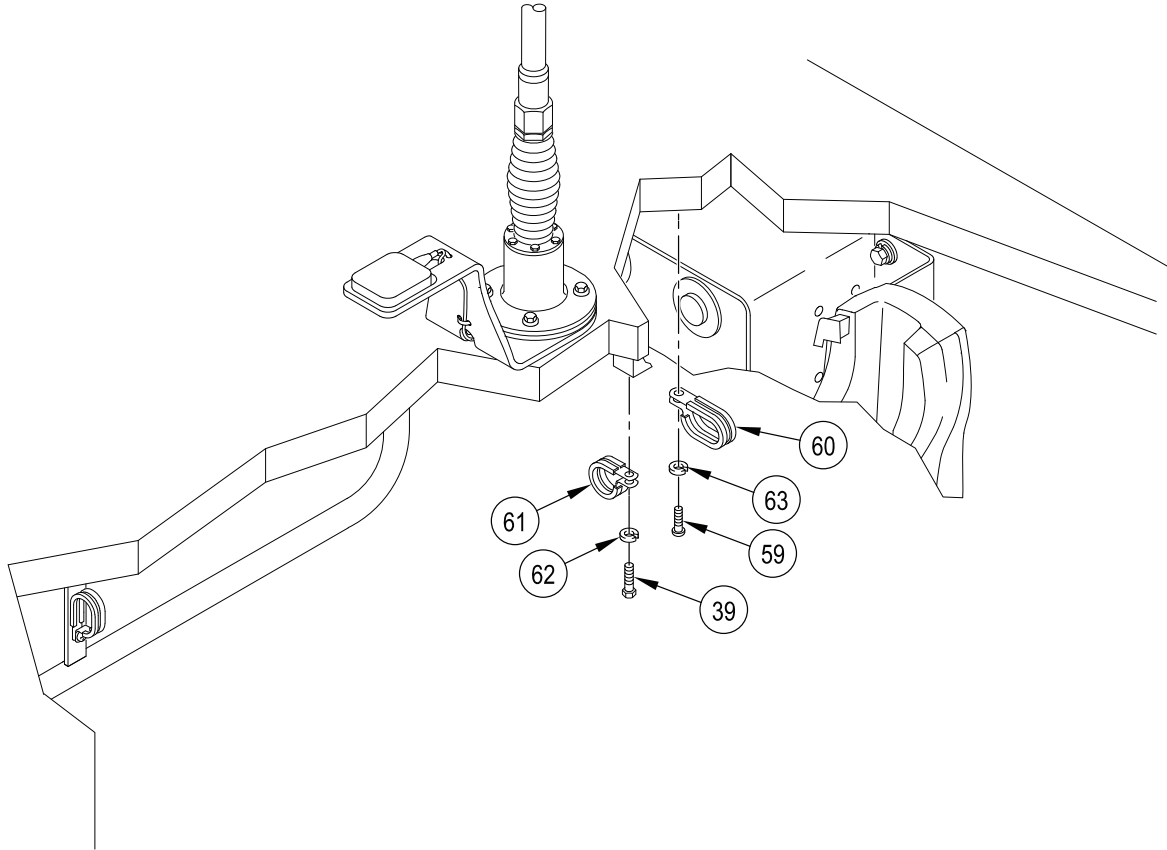


Figure 18. RCU Cable, GPS Cable, and Power Harness Clamps Installation

INSTALL RCU CABLE, GPS CABLE, POWER HARNESS, AND RCU TO PDA CABLE**NOTE**

Do not secure cables with tie straps until installation is complete and the cables have been adjusted at both ends.

1. Route RCU cable (29), GPS cable (13), and power harness (28) from rear of vehicle through clamps (61) and (60) along right rail front of crew compartment.
2. Secure cables (13), (28), and (29) together with tie straps (16).

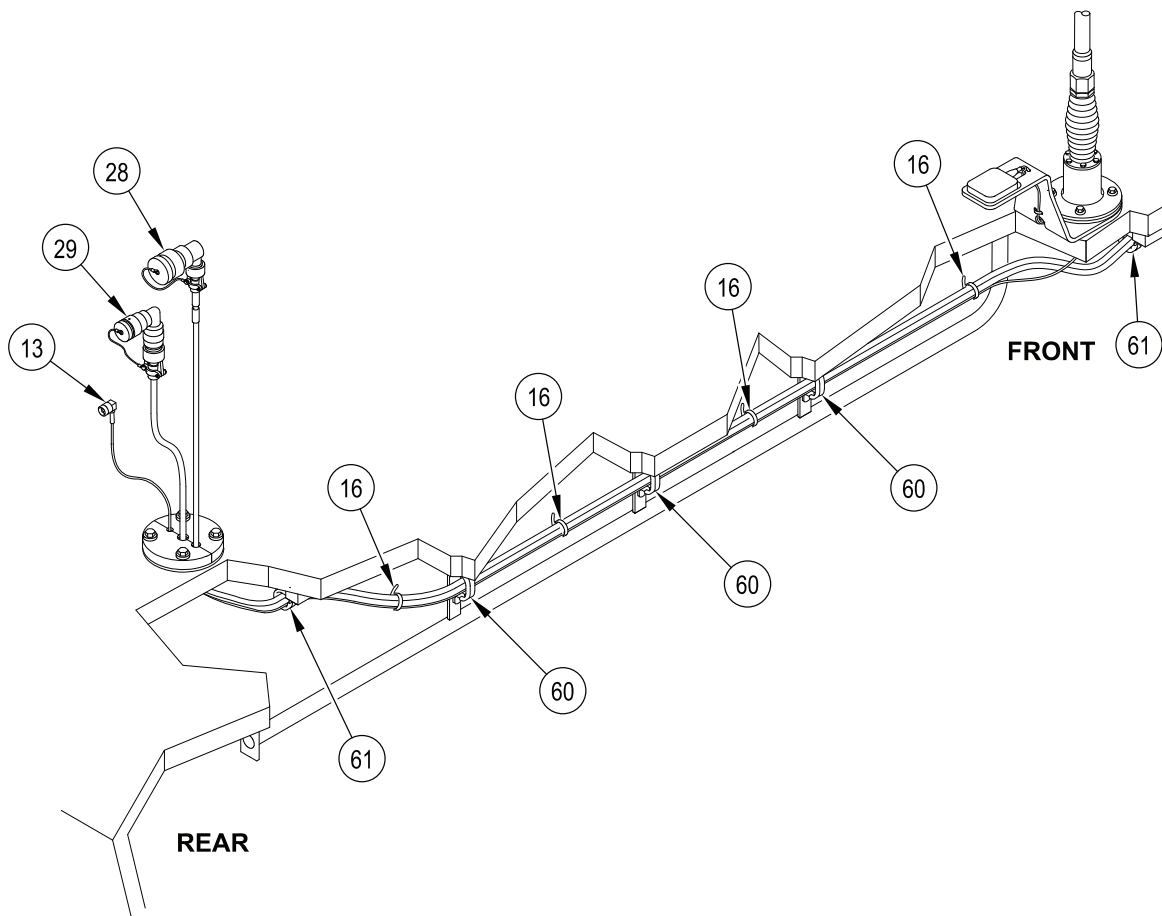


Figure 19. RCU Cable, GPS Cable, and Power Harness Installation

NOTE

For M1068A3, do Steps 3 – 10. For M577A3, do Steps 11 – 17.

3. Continue routing RCU cable (29) and power harness (28) through clamp (60).
4. Continue routing RCU cable (29) down through clamp (54) to RCU/PDA bracket assembly.
5. Continue routing power harness (28) down through clamp (47) to the auxiliary radio power connector location.
6. Route PDA power harness lead up through clamp (47) to PDA cradle location.
7. Remove screw (66) and lockwasher (64) securing existing loop clamp and wiring harness to hull. Retain hardware for re-installation.
8. Install power harness ground lead (65) over existing loop clamp and wiring harness. Secure with screw (66) and lockwasher (64).
9. Stow RCU to PDA cable within RCU/PDA bracket assembly and secure it with a tie strap.
10. Tighten all hardware securing all clamps and cables.

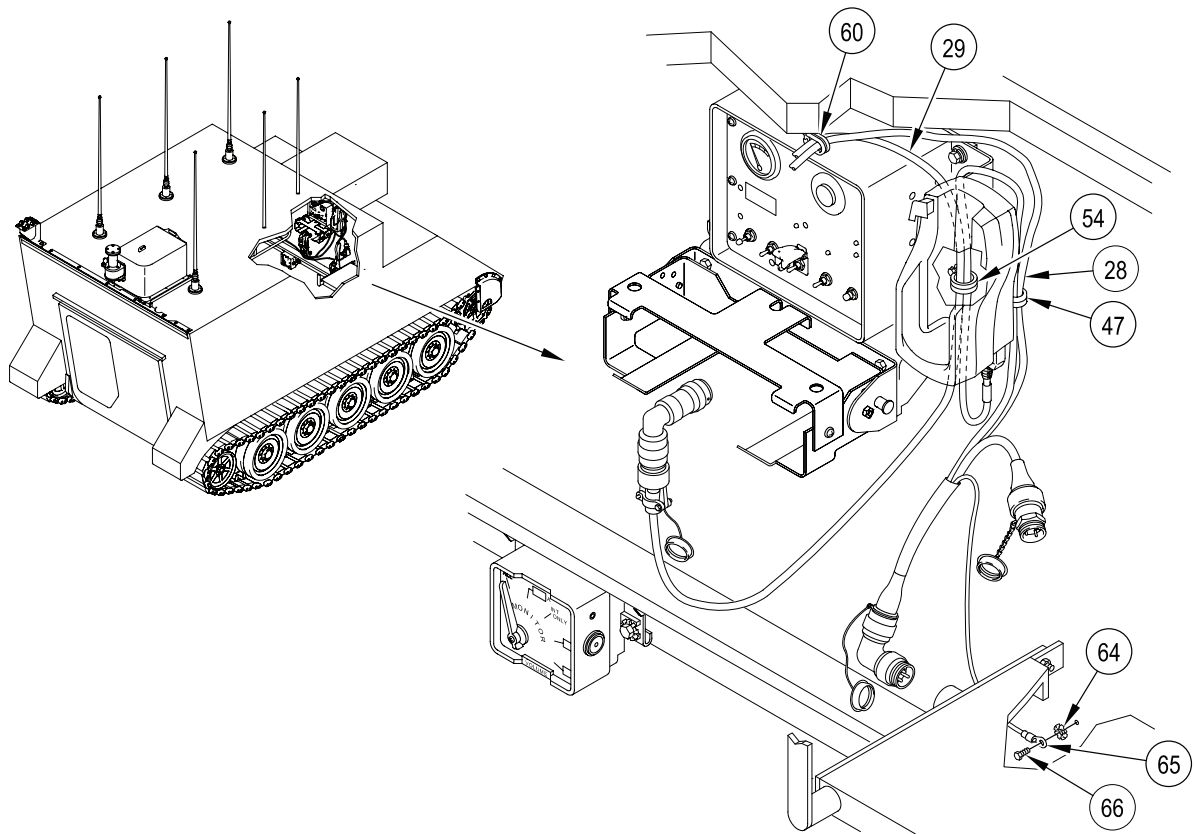


Figure 20. RCU Cable, Power Harness, and RCU to PDA Cable Installation (M1068A3 Only)

11. Continue routing RCU cable (29) and power harness (28) through clamps (60) and (54).
12. Continue routing RCU cable (29) to RCU/PDA bracket assembly and power harness (28) to the auxiliary radio power connector location.
13. Route PDA power harness lead over to PDA cradle location.
14. Remove screw (66) and lockwasher (64) securing existing loop clamp and wiring harness to hull. Retain hardware for re-installation.
15. Install power harness ground lead (65) over existing loop clamp and wiring harness. Secure with screw (66) and lockwasher (64).
16. Stow RCU to PDA cable within RCU/PDA bracket assembly and secure it with a tie strap.
17. Tighten all hardware securing all clamps and cables.

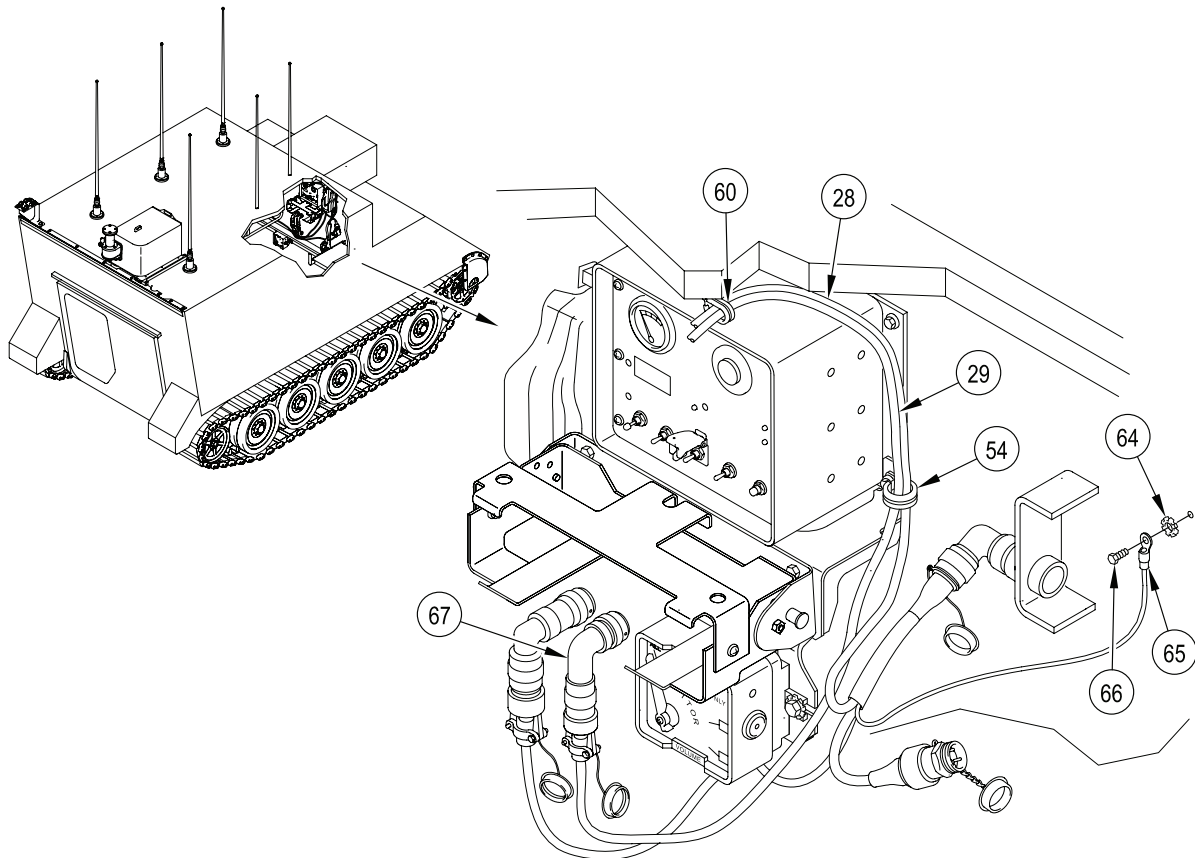


Figure 21. RCU Cable, Power Harness, and RCU to PDA Cable Installation (M577A3 Only)

END OF WORK PACKAGE

CHAPTER 3
REPAIR PARTS AND SPECIAL TOOLS LIST (RPSTL)

WORK PACKAGE INDEX

<u>Title</u>	<u>Sequence No.</u>
REPAIR PARTS AND SPECIAL TOOLS LIST (RPSTL) INTRODUCTION.....	0006 00
CREW II MODIFICATION KIT - 12498005	0007 00
NATIONAL STOCK NUMBER INDEX.....	0008 00
PART NUMBER INDEX	0009 00

**REPAIR PARTS AND SPECIAL TOOLS LIST (RPSTL)
INTRODUCTION**

0006 00

SCOPE

This Repair Parts and Special Tools List (RPSTL) lists and authorizes spares and repair parts for performance of sustainment on the CREW II modification kit for the M1068A3/M577A3. It authorizes the requisitioning, issue, and disposition of spares and repair parts as indicated by the Source, Maintenance, and Recoverability (SMR) codes.

GENERAL

In addition to the Introduction work package, this RPSTL is divided into the following work packages:

1. **Repair Parts List Work Packages.** Work packages containing lists of spares and repair parts authorized by this RPSTL for use in the performance of maintenance. These work packages also include parts which must be removed for replacement of the authorized parts. Parts lists are composed of functional groups in ascending alphanumeric sequence, with the parts in each group listed in ascending figure and item number sequence. Sending units, brackets, filters, and bolts are listed with the component they mount on. Bulk materials are listed by item name in FIG. BULK at the end of the work packages. Repair parts kits are listed separately in their own functional group and work package. Repair parts for reparable special tools are also listed in a separate work package. Items listed are shown on the associated illustrations.
2. **Special Tools List Work Packages.** Work packages containing lists of special tools, special TMDE, and special support equipment authorized by this RPSTL (as indicated by Basis of Issue (BOI) information in the DESCRIPTION AND USABLE ON CODE (UOC) column). Tools that are components of common tool sets and/or Class VII are not listed.
3. **Cross-Reference Indexes Work Packages.** There are two cross-reference indexes work packages in this RPSTL: the National Stock Number (NSN) Index work package, and the Part Number (P/N) Index work package. The National Stock Number Index work package refers you to the figure and item number. The Part Number Index work package refers you to the figure and item number.

EXPLANATION OF COLUMNS IN THE REPAIR PARTS LIST AND SPECIAL TOOLS LIST WORK PACKAGES

Item No. (Column (1)). Indicates the number used to identify items called out in the illustration.

SMR Code (Column (2)). The Source, Maintenance, and Recoverability (SMR) code is a 5-position code containing supply/requisitioning information, maintenance category authorization criteria, and disposition instruction, as shown in the following breakout:

TABLE 1. SMR Code Explanation

Source Code XXxxx	Maintenance Code xxXXx	Recoverability Code xxxxX
1 st two positions: How to get an item.	3 rd position: Who can install, replace, or use the item.	5 th position: Who determines disposition action on unserviceable items?

* Complete Repair: Maintenance capacity, capability, and authority to perform all corrective maintenance tasks of the "Repair" function in a use/user environment in order to restore serviceability to a failed item.

**REPAIR PARTS AND SPECIAL TOOLS LIST (RPSTL)
INTRODUCTION – Continued**

0006 00

- a. Source Code. The source code tells you how to get an item needed for maintenance, repair, or overhaul of an end item/equipment. Explanations of source codes follow:

Source Code	Application/Explanation
PA PB PC PD PE PF PG PH PR PZ	<p>Stocked items: Use the applicable NSN to request/requisition items with these source codes. They are authorized to the category indicated by the code entered in the 3rd position of the SMR code.</p> <p style="text-align: center;">NOTE</p> <p style="text-align: center;">Items coded PC are subject to deterioration.</p>
KD KF KB	<p>Items with these codes are not to be requested/requisitioned individually. They are part of a kit which is authorized to the maintenance category indicated in the 3rd position of the SMR code. The complete kit must be requisitioned and applied.</p>
MF - Made at field MH - Made at below depot/sustainment level ML - Made at SRA MD - Made at Depot	<p>Items with these codes are not to be requested/requisitioned individually. They must be made from bulk material which is identified by the part number in the DESCRIPTION AND USABLE ON CODE (UOC) column and listed in the bulk material group of the repair parts list in the RPSTL. If the item is authorized to you by the 3rd position code of the SMR code, but the source code indicates it is made at a higher level, order the item from the higher level of maintenance.</p>
AF - Assembled by field AH - Assembled by below depot sustainment level AL - Assembled by SRA AD - Assembled by Depot	<p>Items with these codes are not to be requested/requisitioned individually. The parts that make up the assembled item must be requisitioned or fabricated and assembled at the level of maintenance indicated by the source code. If the 3rd position code of the SMR code authorizes you to replace the item, but the source code indicates the item is assembled at a higher level, order the item from the higher level of maintenance.</p>
XA	<p>Do not requisition an XA-coded item. Order its next higher assembly. (Also, refer to the note below.)</p>
XB	<p>If an XB-coded item is not available from salvage, order it using the CAGEC and part number given.</p>
XC	<p>Installation drawing, diagram, instruction sheet, field service drawing that is identified by manufacturer's part number.</p>
XD	<p>Item is not stocked. Order an XD-coded item through normal supply channels using the CAGEC and part number given if no NSN is available.</p> <p style="text-align: center;">NOTE</p> <p>Cannibalization or controlled exchange, when authorized, may be used as a source of supply for items with the above source codes, except for those source-coded "XA" or those aircraft support items restricted by requirements of AR 750-1.</p>

REPAIR PARTS AND SPECIAL TOOLS LIST (RPSTL)
INTRODUCTION – Continued

0006 00

- b. Maintenance Code. Maintenance codes tell you the level(s) of maintenance authorized to use the repair support items. The maintenance codes are entered in the 3rd and 4th positions of the SMR code as follows:

Third Position. The maintenance code entered in the third position tells you the lowest maintenance level authorized to remove, replace, and use an item. The maintenance code entered in the third position will indicate authorization to one of the following levels of maintenance:

Maintenance Code	Application/Explanation
F	Field maintenance can remove, replace, and use the item.
H	Below Depot Sustainment maintenance can remove, replace, and use the item.
L	Specialized repair activity can remove, replace, and use the item.
G	Afloat and ashore intermediate maintenance can remove, replace, and use the item (Navy only)
K	Contractor facility can remove, replace, and use the item
Z	Item is not authorized to be removed, replaced, or used as any maintenance level
D	Depot level can remove, replace, and use the item.

*NOTE – Army may use C in the third position. However, for joint service publications Army will use O.

Fourth Position. The maintenance code entered in the fourth position tells you whether or not the item is to be repaired and identifies the lowest maintenance level with the capability to do complete repair (perform all authorized repair functions).

NOTE

Some limited repair may be done on the item at a lower level of maintenance if authorized by the Maintenance Allocation Chart (MAC) and SMR codes.

Maintenance Code	Application/Explanation
F	Field is the lowest level that can do complete repair of the item.
H	Below Depot Sustainment is the lowest level that can do complete repair of the item.
L	Specialized repair activity is the lowest level that can do complete repair of the item.
D	Depot is the lowest level that can do complete repair of the item.
K	Complete repair is done at contractor facility.
Z	Nonreparable. No repair is authorized.
B	No repair is authorized. No parts or special tools are authorized for the maintenance of a B-coded item. However, the item may be reconditioned by adjusting, lubricating, etc., at the user level.

**REPAIR PARTS AND SPECIAL TOOLS LIST (RPSTL)
INTRODUCTION – Continued**

0006 00

- c. Recoverability Code. Recoverability codes are assigned to items to indicate the disposition action on unserviceable items. The recoverability code is entered in the fifth position of the SMR code as follows:

Recoverability Code	Application/Explanation
Z	Nonreparable item. When unserviceable, condemn and dispose of the item at the level of maintenance shown in 3rd position of SMR code.
F	Reparable item. When uneconomically repairable, condemn and dispose of the item at the field level.
H	Reparable item. When uneconomically repairable, condemn and dispose of the item at the below depot sustainment level.
D	Reparable item. When beyond lower level repair capability, return to depot. Condemnation and disposal of item not authorized below depot level.
L	Reparable item. Condemnation and disposal not authorized below Specialized Repair Activity (SRA).
A	Item requires special handling or condemnation procedures because of specific reasons (e.g., precious metal content, high dollar value, critical material, or hazardous material). Refer to appropriate manuals/directives for specific instructions.
K	Reparable item. Condemnation and disposal to be performed at contractor facility.

National Stock Number (Column (3)). The NSN for the item is listed in this column.

CAGE Code (Column (4)). The Commercial and Government Entity Code (CAGEC) is a 5-digit code which is used to identify the manufacturer, distributor, or Government agency/activity that supplies the item.

Part Number (Column (5)). Indicates the primary number used by the manufacturer (individual, company, firm, corporation, or Government activity), which controls the design and characteristics of the item by means of its engineering drawings, specifications standards, and inspection requirements to identify an item or range of items.

NOTE

When you use an NSN to requisition an item, the item you receive may have a different part number from the number listed.

Description and Usable on Code (UOC) (Column (6)). This column includes the following information:

1. The Federal item name and, when required, a minimum description to identify the item.
2. Part numbers of bulk materials are referenced in this column in the line entry to be manufactured or fabricated.
3. Hardness Critical Item (HCI). A support item that provides the equipment with special protection from electromagnetic pulse (EMP) damage during a nuclear attack.
4. The statement END OF FIGURE appears just below the last item description in column (6) for a given figure in both the repair parts list and special tools list work packages.

QTY (Column (7)). The QTY (quantity per figure column) indicates the quantity of the item used in the breakout shown on the illustration figure, which is prepared for a functional group, sub-functional group, or an assembly. A "V" appearing in this column in place of a quantity indicates that no specific quantity is applicable (e.g., shims, spacers).

EXPLANATION OF CROSS-REFERENCE INDEXES WORK PACKAGES FORMAT AND COLUMNS

1. National Stock Number (NSN) Index Work Package. NSNs in this index are listed in National Item Identification Number (NIIN) sequence.

STOCK NUMBER Column. This column lists the NSN in NIIN sequence. The NIIN consists of the last nine digits of the NSN. When using this column to locate an item, ignore the first four digits of the NSN. However, the complete NSN should be used when ordering items by stock number.

For example, if the NSN is 5385-01-574-1476, the NIIN is 01-574-1476.

FIGURE NUMBER Column. This column lists the number of the figure where the item is identified/located. The figures are in numerical order in the repair parts list work packages.

ITEM Column. The item number identifies the item associated with the figure listed in the adjacent **FIGURE** column. This item is also identified by the NSN listed on the same line.

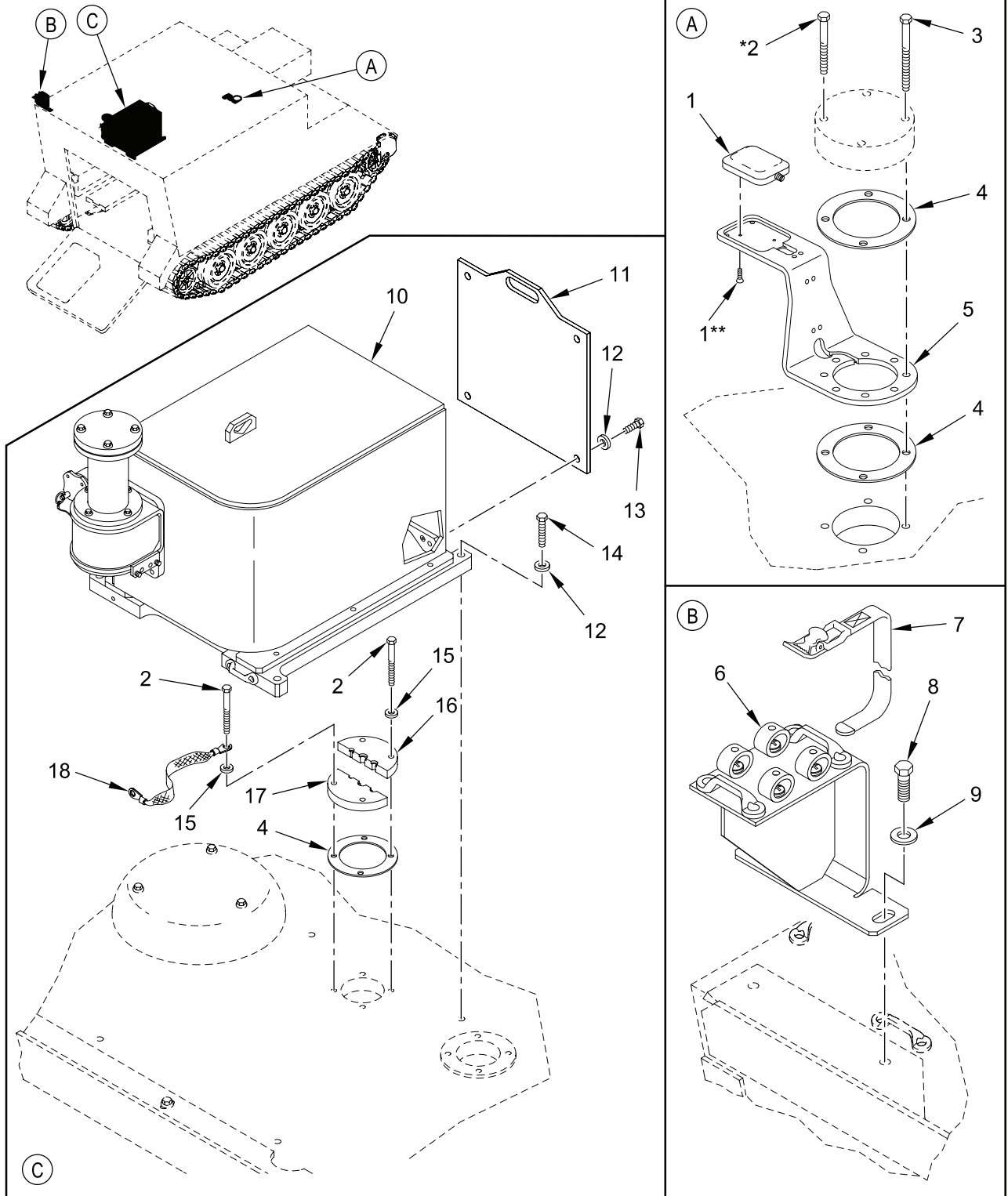
2. Part Number (P/N) Index Work Package. Part numbers in this index are listed in ascending alphanumeric sequence (vertical arrangement of letter and number combinations which places the first letter or digit of each group in order A through Z, followed by the numbers 0 through 9 and each following letter or digit in like order).

PART NUMBER Column. Indicates the part number assigned to the item.

FIGURE Column. This column lists the number of the figure where the item is identified/located in the repair parts and special tools list work packages.

ITEM Column. The item number is the number assigned to the item as it appears in the figure referenced in the adjacent figure number column.

END OF WORK PACKAGE



* REQUIRED WHEN SINGARS ANTENNA IS INSTALLED

** PART OF ANTENNA ASSEMBLY

Figure 1. CREW II Modification Kit - 12498005
(Sheet 1 of 4)

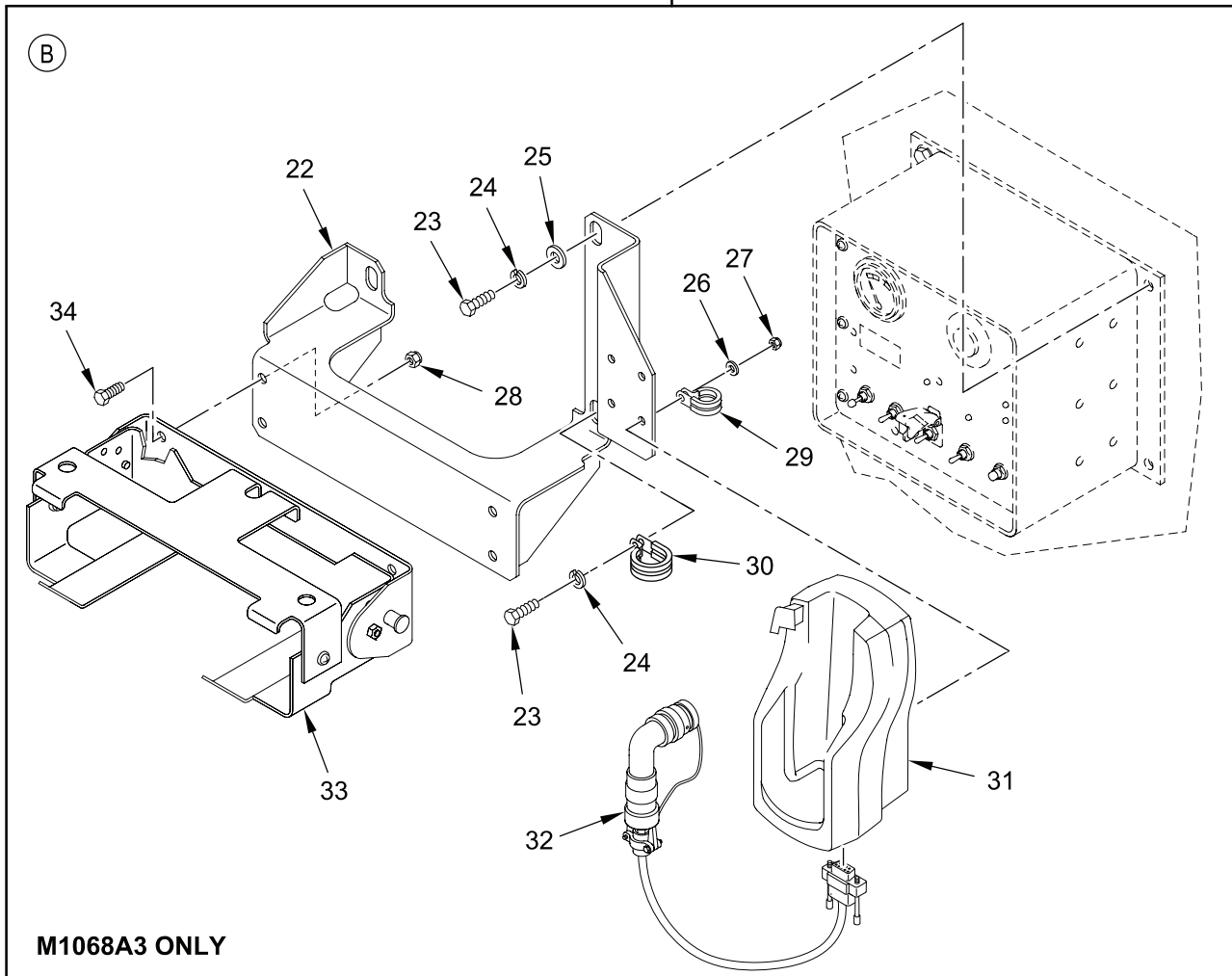
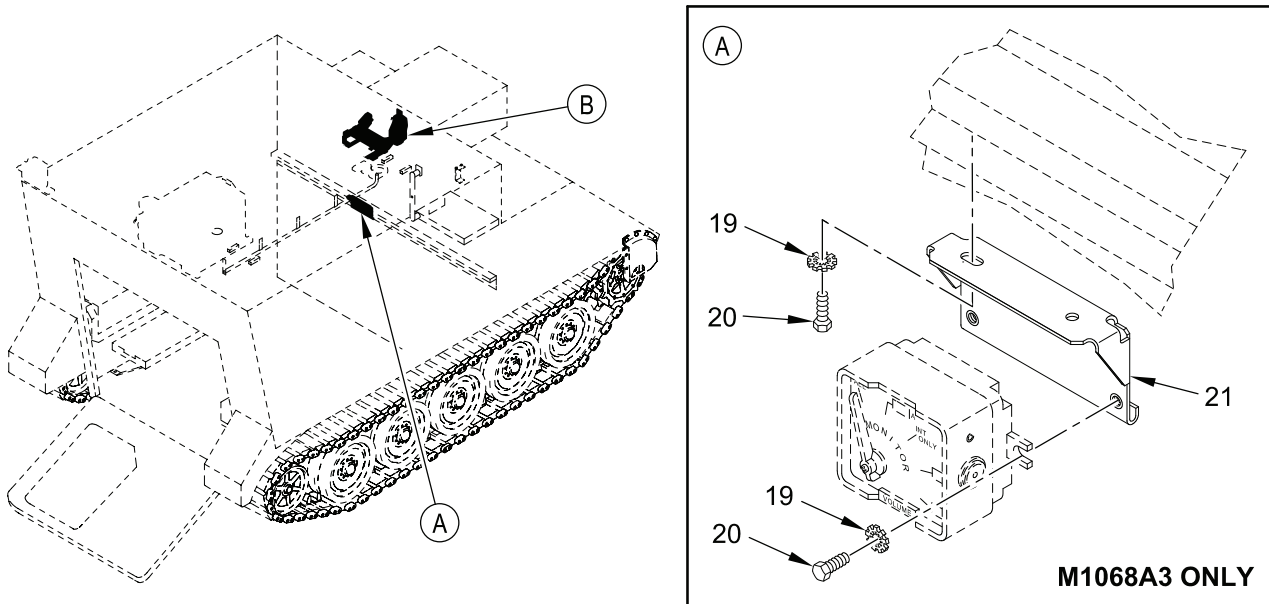
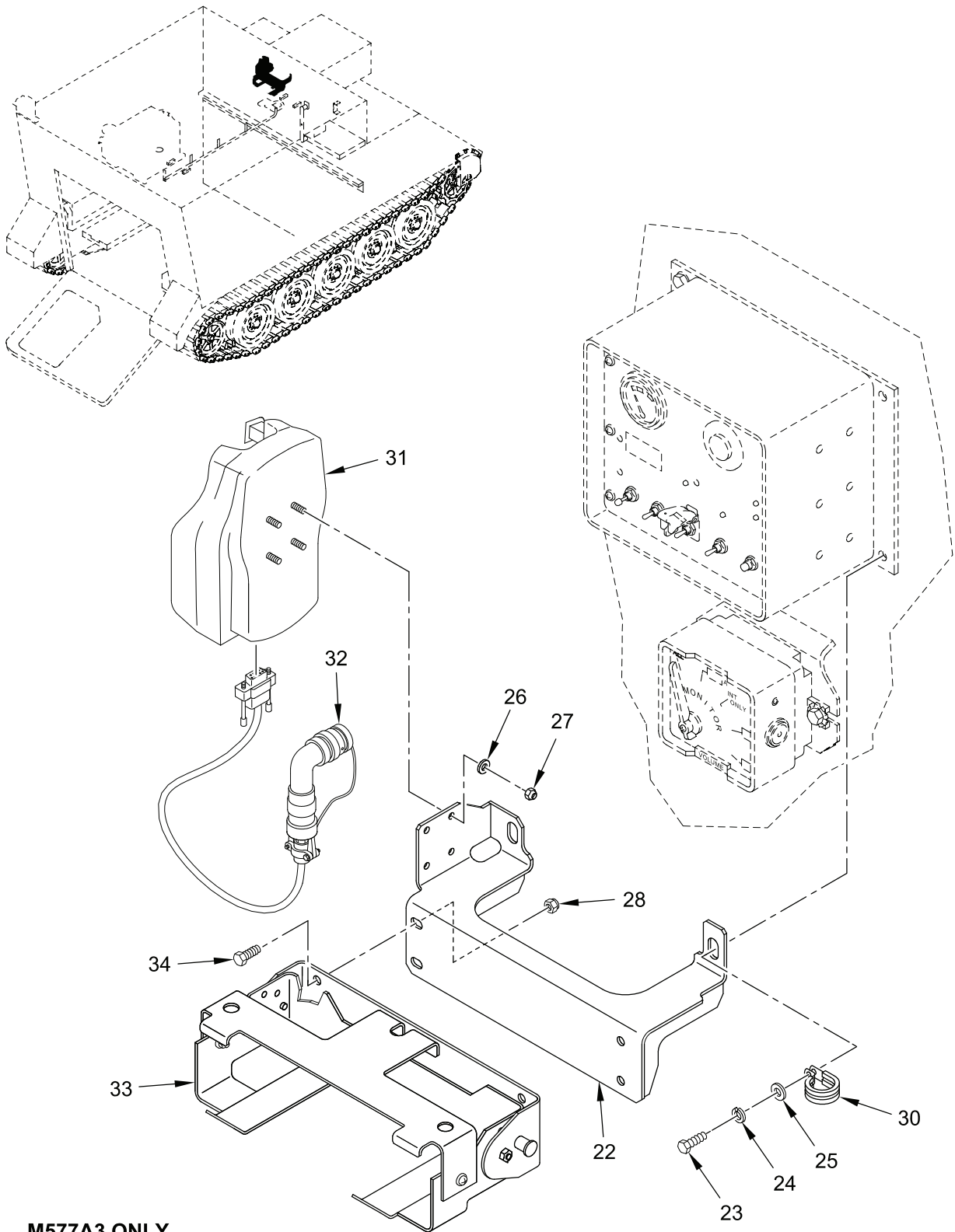
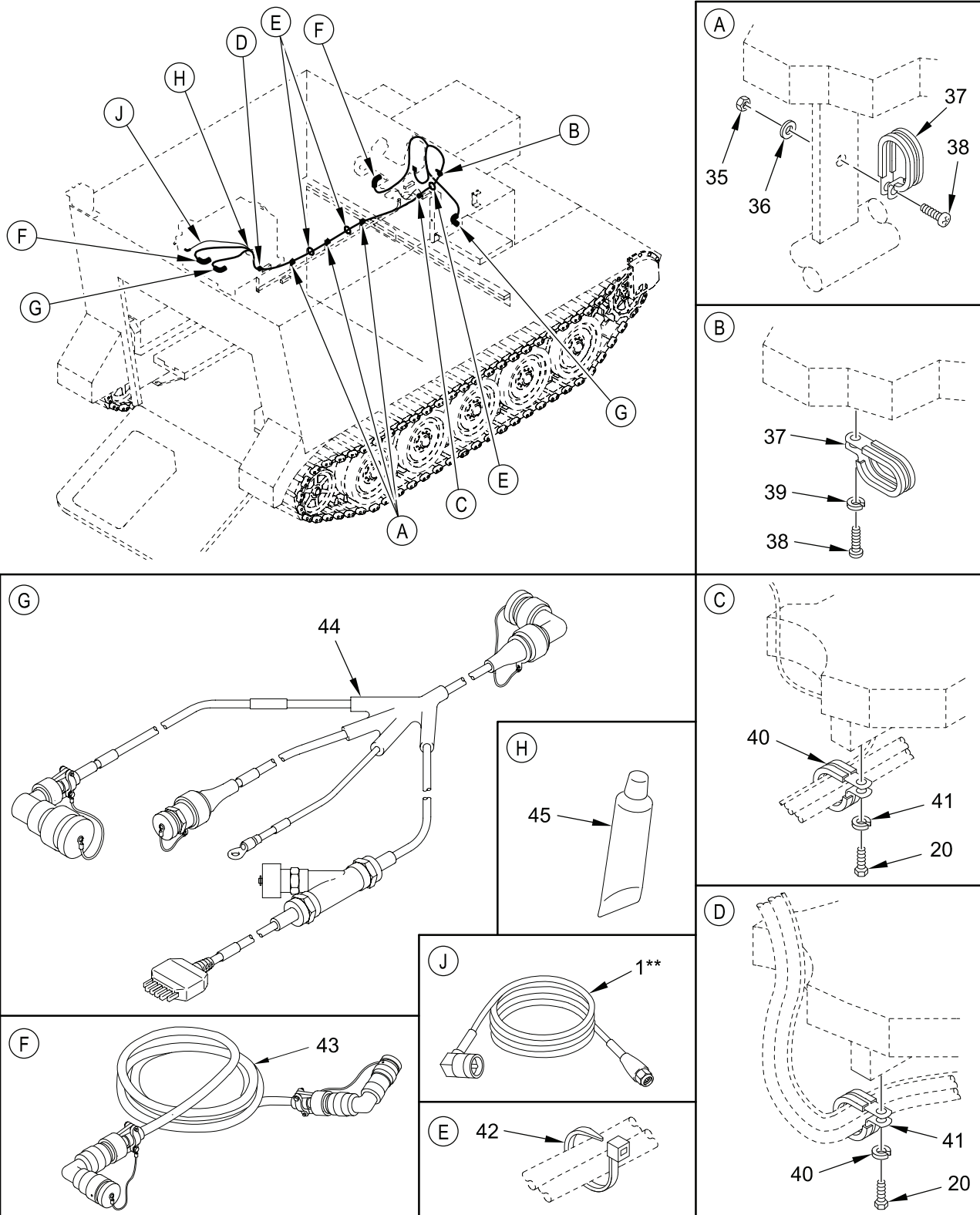


Figure 1. CREW II Modification Kit - 12498005
(Sheet 2 of 4)



M577A3 ONLY

Figure 1. CREW II Modification Kit - 12498005
(Sheet 3 of 4)



** PART OF ANTENNA ASSEMBLY

Figure 1. CREW II Modification Kit - 12498005
(Sheet 4 of 4)

CREW II MODIFICATION KIT - 12498005 – Continued

0007 00

(1) ITEM NO	(2) SMR	(3) NSN	(4) CAGE	(5) PART NUMBER	(6) DESCRIPTION AND USABLE ON CODE (UOC)	(7) QTY
GROUP 4202 ELECTRICAL CONTROLS (MAIN AND AUXILIARY) FIG. 1. CREW II MODIFICATION KIT 12498005 (M1068A3/M577A3)						
1	PAFZZ	5985-01-552-5896	1BEX2	35089	ANTENNA ASSEMBLY..... UOC:AP3,AP5,	1
2	PAFZZ	5305-00-821-3869	80204	B1821BH038C175N	SCREW,CAP,HEX HEAD..... UOC:AP3,AP5,	8
3	PAFZZ	5305-00-781-3926	80204	B1821BH038C275N	SCREW,CAP,HEX HEAD..... UOC:AP3,AP5,	4
4	PAFZZ	5330-00-772-6600	19207	7726600	GASKET..... UOC:AP3,AP5,	3
5	PAFZZ		19207	12498024	MOUNT,GPS,CREW II..... UOC:AP3,AP5,	1
6	PAFZZ		19207	12498066	CATCH,ANTENNA..... UOC:AP3,AP5,	1
7	PAFZZ	5340-00-753-3743	19207	8690519	STRAP,WEBBING..... UOC:AP3,AP5,	1
8	PAFZZ	5305-00-068-0511	80204	B1821BH038C125N	SCREW,CAP,HEX HEAD..... UOC:AP3,AP5,	2
9	PAFZZ	5310-00-809-4091	96906	MS27183-15	WASHER,FLAT..... UOC:AP3,AP5,	2
10	PAFZZ		19207	12498072	ASSY,ENCLOSURE..... UOC:AP3,AP5,	1
11	PAFZZ		19207	12498014	COVER,ENCLOSURE..... UOC:AP3,AP5,	1
12	PAFZZ	5310-00-866-4417	19207	10910174-5	WASHER,FLAT..... UOC:AP3,AP5,	8
13	PAFZZ	5305-00-071-2069	80204	B1821BH050C150N	SCREW,CAP,HEX HEAD..... UOC:AP3,AP5,	4
14	PAFZZ	5305-00-071-2072	80204	B1821BH050C225N	SCREW,CAP,HEX HEAD..... UOC:AP3,AP5,	4
15	PAFZZ	5310-00-877-5972	19204	10910174-3	WASHER,FLAT..... UOC:AP3,AP5,	4
16	PAFZZ		19207	12498042-2	PLATE..... UOC:AP3,AP5,	1
17	PAFZZ		19207	12498042-1	PLATE..... UOC:AP3,AP5,	1
18	PAFZZ		19207	12498047-1	STRAP,GROUND..... UOC:AP3,AP5,	1
19	PAFZZ	5310-00-889-2527	96906	MS45904-72	WASHER,LOCK..... UOC:AP3,	4
20	PAFZZ	5306-00-226-4827	80204	B1821BH031C100N	BOLT,MACHINE..... UOC:AP3,AP5,	6
21	PAFZZ		19207	12498075	ASSY,MOUNT,INTERCOM..... UOC:AP3,	1
22	PAFZZ		19207	12498057	BRACKET,PDA/RCU..... UOC:AP3,	1
22	PAFZZ		19207	12498055	BRACKET,PDA/RCU..... UOC:AP5,	1
23	PAFZZ	5306-01-112-8681	80204	B1821BH038C125L	BOLT,MACHINE..... UOC:AP3,AP5,	3
24	PAFZZ	5310-00-984-7042	80205	MS35338-141	WASHER,LOCK..... UOC:AP3,AP5,	3
25	PAFZZ	5310-00-080-6004	96906	MS27183-14	WASHER,FLAT..... UOC:AP3,AP5,	2
26	PAFZZ	5310-01-311-0004	80205	MS15795-856	WASHER,FLAT..... UOC:AP3,AP5,	4
27	PAFZZ	5310-00-811-3494	80205	MS21044N08	NUT,SELF-LOCKING,HEX..... UOC:AP3,AP5,	4
28	PAFZZ	5310-01-505-0247	81349	M45913/1-4CG5Z	NUT,SELF-LOCKING,HEX..... UOC:AP3,AP5,	4

CREW II MODIFICATION KIT - 12498005 – Continued

0007 00

(1) ITEM NO	(2) SMR	(3) NSN	(4) CAGE	(5) PART NUMBER	(6) DESCRIPTION AND USABLE ON CODE (UOC)	(7) QTY
29	PAFZZ	5340-00-922-6300	80205	MS21333-77	CLAMP, LOOP UOC: AP3,	1
30	PAFZZ	5340-00-833-3049	80205	MS21333-127	CLAMP, LOOP UOC: AP3, AP5,	1
31	PAFZZ		30347	VDC7X00-P000R	CRADLE, PDA UOC: AP3, AP5,	1
32	PAFZZ		1YF27	A3312450-4	CABLE, RCU TO PDA UOC: AP3, AP5,	1
33	PAFZZ		28541	SCP1600	BRACKET, MOUNTING UOC: AP3, AP5,	2
34	PAFZZ	5305-00-071-2505	80204	B1821BH025C088N	SCREW, CAP, HEX HEAD UOC: AP3, AP5,	4
35	PAFZZ			M45913/1-010CG5Z	NUT, SELF-LOCKING, HEX UOC: AP3, AP5,	3
36	PAFZZ	5310-00-763-3413	80205	MS15795-847	WASHER, FLAT UOC: AP3, AP5,	3
37	PAFZZ	5340-00-926-5449	96906	MS21334-28	CLAMP, LOOP UOC: AP3, AP5,	4
38	PAFZZ	5305-00-984-6212	80205	MS35206-265	SCREW, MACHINE UOC: AP3, AP5,	4
39	PAFZZ	5310-00-933-8120	80205	MS35338-138	WASHER, LOCK UOC: AP3, AP5,	1
40	PAFZZ	5340-00-725-5267	80205	MS21333-115	CLAMP, LOOP UOC: AP3, AP5,	2
41	PAFZZ	5310-00-974-6623	80205	MS35338-140	WASHER, LOCK UOC: AP3, AP5,	2
42	PAFZZ	5975-00-074-2072	81343	MS3367-1-9	STRAP, TIEDOWN, ELECTRICAL UOC: AP3, AP5,	20
43	PAFZZ		1YF27	A3312449-9	CABLE, RCU UOC: AP3, AP5,	1
44	PAFZZ		1YF27	A3312451-3	POWER HARNESS UOC: AP3, AP5,	1
45	PAFZZ	8040-01-501-5557	71984	732RTV	ADHESIVE UOC: AP3, AP5,	1

END OF FIGURE

END OF WORK PACKAGE

NATIONAL STOCK NUMBER INDEX

0008 00

NATIONAL STOCK NUMBER INDEX

STOCK NUMBER	FIG.	ITEM	STOCK NUMBER	FIG.	ITEM
5340-00-922-6300	1	29			
5305-00-068-0511	1	8			
5305-00-071-2069	1	13			
5305-00-071-2072	1	14			
5305-00-071-2505	1	34			
5975-00-074-2072	1	42			
5310-00-080-6004	1	25			
5306-00-226-4827	1	20			
5340-00-725-5267	1	40			
5340-00-753-3743	1	7			
5310-00-763-3413	1	36			
5330-00-772-6600	1	4			
5305-00-781-3926	1	3			
5310-00-809-4091	1	9			
5310-00-811-3494	1	27			
5305-00-821-3869	1	2			
5340-00-833-3049	1	30			
5310-00-866-4417	1	12			
5310-00-877-5972	1	15			
5310-00-889-2527	1	19			
5310-00-933-8120	1	39			
5310-00-974-6623	1	41			
5305-00-984-6212	1	38			
5310-00-984-7042	1	24			
5306-01-112-8681	1	23			
5310-01-311-0004	1	26			
8040-01-501-5557	1	45			
5310-01-505-0247	1	28			
5340-00-926-5449	1	37			
5985-01-552-5896	1	1			

END OF WORK PACKAGE

PART NUMBER INDEX**0009 00**

PART NUMBER INDEX

PART NUMBER	FIGURE NO	ITEM NO	PART NUMBER	FIGURE NO	ITEM NO
10910174-3	1	15			
10910174-5	1	12			
12498014	1	11			
12498024	1	5			
12498042-1	1	17			
12498042-2	1	16			
12498047-1	1	18			
12498055	1	22			
12498057	1	22			
12498066	1	6			
12498072	1	10			
12498075	1	21			
35089	1	1			
732RTV	1	45			
7726600	1	4			
8690519	1	7			
A3312449-9	1	43			
A3312450-4	1	32			
A3312451-3	1	44			
B1821BH025C088N	1	34			
B1821BH031C100N	1	20			
B1821BH038C125L	1	23			
B1821BH038C125N	1	8			
B1821BH038C175N	1	2			
B1821BH038C275N	1	3			
B1821BH050C150N	1	13			
B1821BH050C225N	1	14			
M45913/1-010CG5Z	1	35			
M45913/1-4CG5Z	1	28			
MS15795-847	1	36			
MS15795-856	1	26			
MS21044N08	1	27			
MS21333-115	1	40			
MS21333-127	1	30			
MS21333-77	1	29*			
MS21334-28	1	37			
MS27183-14	1	25			
MS27183-15	1	9			
MS3367-1-9	1	42			
MS35206-265	1	38			
MS35338-138	1	39			
MS35338-140	1	41			
MS35338-141	1	24			
MS45904-72	1	19			
SCP1600	1	33			
VDC7X00-P000R	1	31			

END OF WORK PACKAGE

CHAPTER 4
SUPPORTING INFORMATION

WORK PACKAGE INDEX

<u>Title</u>	<u>Sequence No.</u>
REFERENCES	0010 00
COMMON TOOLS AND SUPPLEMENTS AND SPECIAL TOOLS/FIXTURES LIST	0011 00
FABRICATED TOOLS.....	0012 00
EXPENDABLE/DURABLE ITEMS LIST	0013 00
REPLACEMENT KIT PARTS - 12498005.....	0014 00

REFERENCES**0010 00****SCOPE**

This work package lists all field manuals, forms, technical manuals, and miscellaneous publications referenced in this manual.

FIELD MANUALS

First Aid for Soldiers FM 4-25.11

FORMS

Recommended Changes to Publications and Blank Forms DA Form 2028

MISCELLANEOUS PUBLICATIONS

Army Material Maintenance Policy AR 750-1

Army Medical Department Expendable/Durable Items CTA 8-100

Army Modification Program AR 750-10

Expendable/Durable Items (except Medical, Class V Repair Parts, and Heraldic Items) CTA 50-970

Field and Garrison Furnishings and Equipment CTA 50-909

Requisition, Receipt, and Issue System AR 725-50

The Army Maintenance Management System (TAMMS) User's Manual DA PAM 750-8

TECHNICAL MANUALS

Operator's Manual for Carrier, Personnel, Full-Tracked, Armored, M113A3; Carrier, Command Post, Light Tracked, M577A3; Carrier, Smoke Generator, Full Tracked, M1059A3; Carrier, Mortar, 120-MM M121, Self Propelled, M1064A3; Carrier, Standardized Integrated Command Post System (SICPS) M1068A3; Carrier, Mechanized Smoke Obscurant, M58 TM 9-2350-277-10

Painting Instructions for Army Material TM 43-0139

Unit Maintenance, Direct Support and General Support Maintenance Repair Parts and Special Tools List (Including Depot Maintenance Repair Parts and Special Tools List) for Carriers: M113A3, M577A3, M1059A3, M1064A3, M1068A3, and M58 TM 9-2350-277-24P

Unit Maintenance Manual for Carrier, Personnel, Full Tracked, Armored M113A3; Carrier, Command Post, Light Tracked M577A3; Carrier, Smoke Generator, Full Tracked M1059A3; Carrier, Mortar, 120-MM M121, Self- Propelled M1064A3; Carrier, Standardized Integrated Command Post System (SICPS) M1068A3; Carrier, Mechanized Smoke Obscurant M58 TM 9-2350-277-20 Volumes 1-6

END OF WORK PACKAGE

**COMMON TOOLS AND SUPPLEMENTS AND SPECIAL
TOOLS/FIXTURES LIST**

0011 00**SCOPE**

This work package lists all common tools, supplements, and special tools/fixtures needed.

Explanation of Columns

Column (1) – Item Number. This number is assigned to the entry in the list and is referenced in the Initial Setup section of the work package under “Tools” to identify the item (e.g., “General Mechanic’s Tool Kit (WP 0008 00, Item 5)”).

Column (2) – Item Name. This column lists the item by noun nomenclature and other descriptive features (e.g. “Tool Kit, General Mechanic’s”).

Column (3) – National Stock Number. This is the National Stock Number (NSN) assigned to the item; use it to requisition the item.

Column (4) – Part Number. Indicates the primary number used by the manufacturer (individual, company, firm, corporation, or Government activity), which controls the design and characteristics of the item by means of its engineering drawings, specifications, standards, and inspection requirements to identify an item or range of items.

Column (5) – Reference. This column identifies the authorizing Supply Catalog (SC) or Repair Parts and Special Tools List (RPSTL) for items listed in this work package.

**COMMON TOOLS AND SUPPLEMENTS AND SPECIAL
TOOLS/FIXTURES LIST – Continued**

0011 00

Table 1. Tool Identification List

(1) ITEM NO.	(2) ITEM NAME	(3) NATIONAL STOCK NUMBER	(4) PART NUMBER	(5) REFERENCE
1	Cutoff Saw, Air Powered	N/A	4089A51 (07BY4)	
2	Die and Tap Set	5180-00-317-8263	41-8789-930-050 (81336)	SC 4940-95-B02
3	Drilling Machine, Upright	N/A	2805A24 (07BY4)	
4	Drill Set, Twist	5133-00-293-0983	DB129B (55719)	SC 4910-95-A74
5	General Mechanic's Tool Kit	5180-00-177-7033	SC 5180-90-CL-N26 (50980)	SC 5180-95-N26
6	Goggles, Industrial	4240-00-052-3776	ANSI Z87.1 (80204)	SC 4910-95-A81
7	Hole Saw Set, Carbide Tipped	N/A	TL1-LNS-30801D	
8	Measuring Tape	5210-00-554-7085	403	
9	Portable Drill, Electric, 1/2 inch	5130-00-889-9004	5130-00-889-9004 (80244)	SC 4910-95-A31
10	Sander, Disk, Electric, Portable	5130-00-596-9728	6112-90 (07429)	SC 4920-99-A63
11	Sling, Endless	3940-00-675-5003	PD101-96	SC 5190-92-M05
12	Wrench, Torque, 1/2 inch Drive, 0-175 ft-lb	5120-00-640-6364	A-A-2411	SC 4940-95-B21

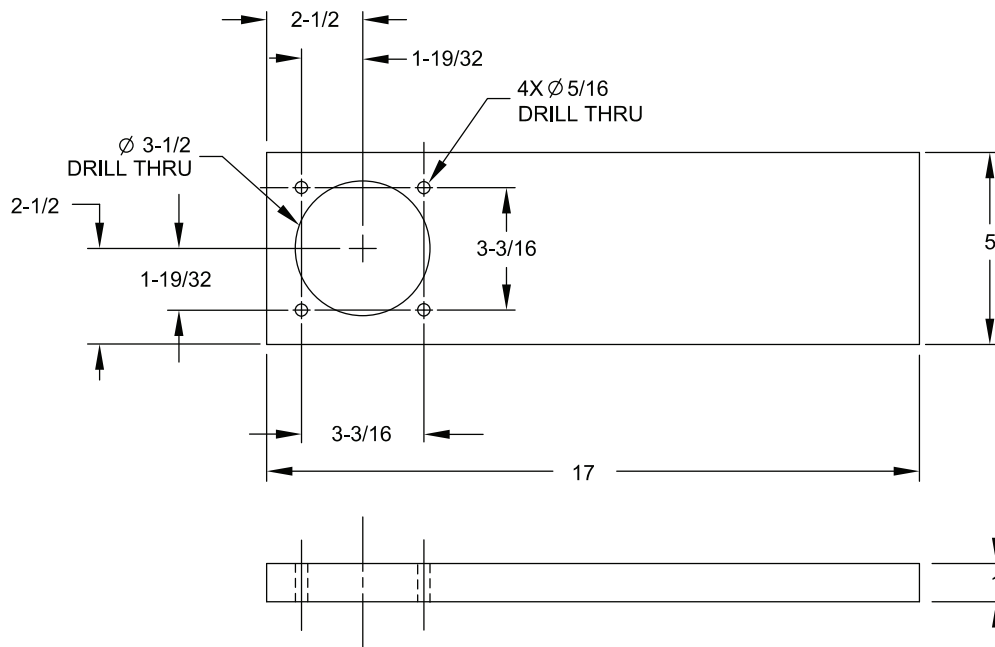
END OF WORK PACKAGE

FABRICATED TOOLS**0012 00****SCOPE**

This work package includes instructions for making tools authorized to be fabricated at sustainment level. These tools are needed for special installation procedures, but are not available in the supply system. The tools are normally fabricated locally when required by the task.

FABRICATION ILLUSTRATIONS

The following figure provides tool fabrication instructions. All parts and bulk materials needed for manufacturing the tool are listed on each figure. When needed, any special explanatory instructions are included in the notes on the figure.



NOTE: ALL DIMENSIONS ARE IN INCHES

Figure 1. Magnetic Drill Base Plate/Template

MATERIAL REQUIRED

Steel, Plate, 1 inch Thick

NOTES:

1. Fabricate as illustrated.
2. Break all sharp edges and corners.

END OF WORK PACKAGE

EXPENDABLE/DURABLE ITEMS LIST

0013 00

SCOPE

This work package lists expendable and durable items that you will need to operate and maintain the M1068A3/M577A3 CREW II Hardware. This list is for information only and is not authority to requisition the listed items. These items are authorized to you by CTA 50-970, Expendable/Durable Items (Except Medical, Class V, Repair Parts, and Heraldic Items), CTA 50-909, Field and Garrison Furnishings and Equipment, or CTA 8-100, Army Medical Department Expendable/Durable Items.

EXPLANATION OF COLUMNS IN THE EXPENDABLE/DURABLE ITEMS LIST

Column (1) Item Number. This number is assigned to the entry in the list and is referenced in the narrative instructions to identify the item (e.g., "Use cleaning compound (WP 0013, Item 1)").

Column (2) Level. This column identifies the lowest level of maintenance that requires the listed item.

- F – Maintainer or ASB
- H – Below Depot or TASMG
- D – Depot

Column (3) National Stock Number (NSN). This is the National Stock Number (NSN) assigned to the item, which you can use to requisition the item.

Column (4) Item Name, Description, Commercial and Government Entity Code (CAGEC), and Part Number (P/N). This column provides the other information you need to identify the item.

Column (5) Unit of Measure (U/M). This code shows the physical measurement or count of an item, such as gallon, dozen, gross, etc.

Table 1. Expendable/Durable Items List

(1) ITEM NUMBER	(2) LEVEL	(3) NATIONAL STOCK NUMBER	(4) ITEM NAME, DESCRIPTION, CAGEC, PART NUMBER	(5) U/M
1	H	6850-01-277-0595	Cleaning Compound, Solvent (59557) 134-HI-SOLV	GL
2	H	7920-00-205-1711	Wiping Rag (58536) A-A-2522	LB
3	H	N/A	Wheel, Cutoff (07BY4) 4550A133	EA

END OF WORK PACKAGE

REPLACEMENT KIT PARTS**0014 00****SCOPE**

This work package includes a table of modification kit parts required for CREW II. The unique components of this list may not currently be available through the normal supply system.

Table 1. M1068A3/M577A3 CREW II Modification Kit - 12498005

NSN	CAGE	PART NUMBER	DESCRIPTION	QTY
5985-01-552-5896	1BEX2	35089	Antenna Assembly	1
5330-00-772-6600	19207	7726600	Gasket	3
5340-00-753-3743	19207	8690519	Strap, Webbing	1
	19207	12498014	Cover, Enclosure	1
	19207	12498024	Mount, GPS, CREW II	1
	19207	12498055	Bracket, PDA/RCU (M577A3)	1
	19207	12498057	Bracket, PDA/RCU (M1068A3)	1
	19207	12498066	Catch, Antenna	1
	19207	12498072	Assy, Enclosure	1
	19207	12498075	Assy, Mount, Intercom	1
5310-00-877-5972	19204	10910174-3	Washer, Flat	4
5310-00-866-4417	19207	10910174-5	Washer, Flat	8
	19207	12498042-1	Plate, Cover	1
	19207	12498042-2	Plate, Cover	1
	19207	12498047-1	Strap, Ground	1
8040-01-501-5557	71984	732RTV	Adhesive	1
	1YF27	A3312449-9	Cable, RCU	1
	1YF27	A3312450-4	Cable, RCU to PDA	1
	1YF27	A3312451-3	Power Harness	1
5305-00-071-2505	80204	B1821BH025C088N	Screw, Cap, Hex Head	4
5306-00-226-4827	80204	B1821BH031C100N	Bolt, Machine	6
5306-01-112-8681	80204	B1821BH038C125L	Bolt, Machine	3
5305-00-068-0511	80204	B1821BH038C125N	Screw, Cap, Hex Head	2
5305-00-821-3869	80204	B1821BH038C175N	Screw, Cap, Hex Head	8
5305-00-781-3926	80204	B1821BH038C275N	Screw, Cap, Hex Head	4

Table 1. M1068A3/M577A3 CREW II Modification Kit - 12498005 – Continued

NSN	CAGE	PART NUMBER	DESCRIPTION	QTY
5305-00-071-2069	80204	B1821BH050C150N	Screw, Cap, Hex Head	4
5305-00-071-2072	80204	B1821BH050C225N	Screw, Cap, Hex Head	4
		M45913/1-010CG5Z	Nut, Self-Locking, Hex	3
5310-01-505-0247	81349	M45913/1-4CG5Z	Nut, Self-Locking, Hex	4
5310-00-763-3413	80205	MS15795-847	Washer, Flat	3
5310-01-311-0004	80205	MS15795-856	Washer, Flat	4
5310-00-811-3494	80205	MS21044N08	Nut, Self-Locking	4
5340-00-725-5267	80205	MS21333-115	Clamp, Loop	2
5340-00-833-3049	80205	MS21333-127	Clamp, Loop	1
5340-00-922-6300	80205	MS21333-77	Clamp, Loop	1
5340-00-926-5449	96906	MS21334-28	Clamp, Loop	4
5310-00-080-6004	96906	MS27183-14	Washer, Flat	2
5310-00-809-4091	96906	MS27183-15	Washer, Flat	2
5975-00-074-2072	81343	MS3367-1-9	Strap, Tiedown, Electrical	20
5305-00-984-6212	80205	MS35206-265	Screw, Machine	4
5310-00-933-8120	80205	MS35338-138	Washer, Lock	1
5310-00-974-6623	80205	MS35338-140	Washer, Lock	2
5310-00-984-7042	80205	MS35338-141	Washer, Lock	3
5310-00-889-2527	96906	MS45904-72	Washer, Lock	4
	28541	SCP1600	Bracket, Mounting	1
	30347	VDC7X00-P000R	Cradle, PDA	1

END OF WORK PACKAGE

INDEX

A – B

C – D

Common Tools and Supplements and Special Tools/Fixtures List 0011 00-1
 CREW II Modification Kit - 12498005 0007 00-1

E

Equipment Description 0002 00-1
 Expendable/Durable Items List 0013 00-1

F

Fabricated Tools 0012 00-1

G – H

I

Installation Procedures

Cable Port and Primary Unit Enclosure 0005 00-9
 Intercom Unit/Mounting Bracket 0005 00-13
 GPS Antenna Stowage Bracket..... 0005 00-8
 GPS Kit 0005 00-1
 RCU/PDA Bracket Assembly (M1068A3 Only) 0005 00-14
 RCU/PDA Bracket Assembly (M577A3 Only) 0005 00-16
 RCU Cable, GPS Cable, and Power Harness Clamps..... 0005 00-18
 RCU Cable, GPS Cable, Power Harness, and RCU to PDA Cable 0005 00-20

Introduction

General 0001 00-1
 Purpose..... 0001 00-1

J – L

M

Modification Procedures

Clearance for CREW II Primary Unit 0004 00-1
 Drill CREW II Cable Port..... 0004 00-3
 Drill CREW II Hull Roof RCU and GPS Cable Clamp 0004 00-7
 Drill CREW II Primary Unit Enclosure Mounting 0004 00-5
 Drill CREW II Right Rail Support Bracket RCU and GPS Cable Clamps..... 0004 00-8
 Drill Intercom Unit Mounting (M1068A3 Only) 0004 00-6

N

National Stock Number Index 0008 00-1

O

P

Part Number Index 0009 00-1

Q

R

References0010 00-1

Removal Procedures

- APU Controller Mounting Hardware0003 00-2
- Extension Cover Tent Angle Bracket Mounting Hardware.....0003 00-3
- Intercom Unit0003 00-1

Repair Parts and Special Tools List (RPSTL)

- CREW II Modification Kit - 12498005.....0007 00-1

Repair Parts and Special Tools List Introduction0006 00-1

Explanation of Columns in the Repair Parts List and Special Tools List Work Packages0006 00-1

Explanation of Cross-Reference Indexes Work Packages Format and Columns.....0006 00-5

General0006 00-1

National Stock Number Index.....0008 00-1

Part Number Index.....0009 00-1

Scope.....0006 00-1

S

T

Tools/Fixture List, Common Tools and Supplements and Special.....0011 00-1

U – Z

RECOMMENDED CHANGES TO PUBLICATIONS AND BLANK FORMS For use of this form, see AR 25-30; the proponent agency is ODISC4.						Use Part II (reverse) for Repair Parts and Special Tool Lists (RPSTL) and Supply Catalogs/Supply Manuals (SC/SM).	DATE Date you filled out this form.
TO: (Forward to proponent of publication or form) (Include ZIP Code) U.S. Army TACOM Life Cycle Management Command ATTN: AMSTA-LC-LMP/TECH PUBS 1 Rock Island Arsenal, Rock Island, IL 61299-7630						FROM: (Activity and location) (Include ZIP Code) Your mailing address	
PART I – ALL PUBLICATIONS (EXCEPT RPSTL AND SC/SM) AND BLANK FORMS							
PUBLICATION/FORM NUMBER TB 9-2350-277-40&P-4						DATE 30 June 2009	Title Installation of Crew II Modification Kit 19207 for Carrier, Command Post, Armored, M577A3 & SICPs M1068A3
ITEM NO.	PAGE NO.	PARA-GRAPH	LINE NO. *	FIGURE NO.	TABLE NO.	RECOMMENDED CHANGES AND REASON (Provide exact wording of recommended changes, if possible).	
SAMPLE							
<i>*Reference to line numbers within the paragraph or subparagraph.</i>							
TYPED NAME, GRADE OR TITLE Your Name				TELEPHONE EXCHANGE/AUTOVON, PLUS EXTENSION		Signature Your Signature	

TO: (Forward direct to addressee listed in publication) U. S. Army TACOM Life Cycle Management Command ATTN: AMSTA-LC-LMPP/TECH PUBS 1 Rock Island Arsenal, Rock Island, IL 61299-7630	FROM: (Activity and location) (Include ZIP Code) Your address	DATE Date you filled out this form
--	---	--

PART II – REPAIR PARTS AND SPECIAL TOOL LISTS AND SUPPLY CATALOGS/SUPPLY MANUALS

PUBLICATION NUMBER TB 9-2350-277-40&P-4	DATE 30 June 2009	TITLE Installation of Crew II Modification Kit for Carrier M577AE & SICPS M1068A3
---	-----------------------------	---

PAGE NO.	COLM NO.	LINE NO.	NATIONAL STOCK NUMBER	REFERENCE NO.	FIGURE NO.	ITEM NO.	TOTAL NO. OF MAJOR ITEMS SUPPORTED	RECOMMENDED ACTION
SAMPLE								

PART III – REMARKS (Any general remarks or recommendations, or suggestions for improvement of publications and blank forms. Additional blank sheets may be used if more space is needed.)

TYPED NAME, GRADE OR TITLE Your Name	TELEPHONE EXCHANGE/AUTOVON, PLUS EXTENSION	SIGNATURE Your Signature
--	---	------------------------------------

RECOMMENDED CHANGES TO PUBLICATIONS AND BLANK FORMS For use of this form, see AR 25-30; the proponent agency is ODISC4.						Use Part II (reverse) for Repair Parts and Special Tool Lists (RPSTL) and Supply Catalogs/Supply Manuals (SC/SM).	DATE
TO: (Forward to proponent of publication or form)(Include ZIP Code) U.S. Army TACOM Life Cycle Management Command ATTN: AMSTA-LC-LMPP/TECH PUBS 1 Rock Island Arsenal, Rock Island, IL 61299-7630						FROM: (Activity and location) (Include ZIP Code)	
PART I – ALL PUBLICATIONS (EXCEPT RPSTL AND SC/SM) AND BLANK FORMS							
PUBLICATION/FORM NUMBER TB 9-2350-277-40&P-4						DATE 30 June 2009	TITLE Installation of Crew II Modification Kit 19207 for Carrier, Armored, M577AE & SICPS M1068A3
ITEM NO.	PAGE NO.	PARA-GRAPH	LINE NO. *	FIGURE NO.	TABLE NO.	RECOMMENDED CHANGES AND REASON (Provide exact wording of recommended changes, if possible).	
TYPED NAME, GRADE OR TITLE				*Reference to line numbers within the paragraph or subparagraph. TELEPHONE EXCHANGE/AUTOVON, PLUS EXTENSION		SIGNATURE	

TO: (Forward direct to addressee listed in publication) U. S. Army TACOM Life Cycle Management Command ATTN: AMSTA-LC-LMPP/TECH PUBS 1 Rock Island Arsenal, Rock Island, IL 61299-7630	FROM: (Activity and location) (Include ZIP Code)	DATE
--	---	-------------

PART II – REPAIR PARTS AND SPECIAL TOOL LISTS AND SUPPLY CATALOGS/SUPPLY MANUALS

PUBLICATION NUMBER TB 9-2350-277-40&P-4	DATE 30 June 2009	TITLE Installation of Crew II Modification Kit for Carrier, Armored, M577A3 & SICPS M1068A3
--	----------------------	---

PAGE NO.	COLM NO.	LINE NO.	NATIONAL STOCK NUMBER	REFERENCE NO.	FIGURE NO.	ITEM NO.	TOTAL NO. OF MAJOR ITEMS SUPPORTED	RECOMMENDED ACTION

PART III – REMARKS (Any general remarks or recommendations, or suggestions for improvement of publications and blank forms. Additional blank sheets may be used if more space is needed.)

TYPED NAME, GRADE OR TITLE	TELEPHONE EXCHANGE/AUTOVON, PLUS EXTENSION	SIGNATURE
----------------------------	--	-----------

RECOMMENDED CHANGES TO PUBLICATIONS AND BLANK FORMS						Use Part II (reverse) for Repair Parts and Special Tool Lists (RPSTL) and Supply Catalogs/Supply Manuals (SC/SM).	DATE
For use of this form, see AR 25-30; the proponent agency is ODISC4.							
TO: (Forward to proponent of publication or form) (Include ZIP Code) U. S. Army TACOM Life Cycle Management Command ATTN: AMSTA-LC-LMPP/TECH PUBS 1 Rock Island Arsenal, Rock Island, IL 61299-7630						FROM: (Activity and location) (Include ZIP Code)	
PUBLICATION/FORM NUMBER TB 9-2350-277-40&P-4						DATE 30 June 2009	TITLE Installation of Crew II Modification Kit for Carrier, Armored, M577A3 & SICPS M1068A3
ITEM NO.	PAGE NO.	PARA-GRAPH	LINE NO. *	FIGURE NO.	TABLE NO.	RECOMMENDED CHANGES AND REASON (Provide exact wording of recommended changes, if possible).	
<i>*Reference to line numbers within the paragraph or subparagraph.</i>							
TYPED NAME, GRADE OR TITLE					TELEPHONE EXCHANGE/AUTOVON, PLUS EXTENSION		SIGNATURE

TO: (Forward direct to addressee listed in publication) U. S. Army TACOM Life Cycle Management Command ATTN: AMSTA-LC-LMPP/TECH PUBS 1 Rock Island Arsenal, Rock Island, IL 61299-7630	FROM: (Activity and location) (Include ZIP Code)	DATE
--	---	-------------

PART II – REPAIR PARTS AND SPECIAL TOOL LISTS AND SUPPLY CATALOGS/SUPPLY MANUALS

PUBLICATION NUMBER TB 9-2350-277-40&P-4				DATE 30 June 2009			TITLE Installation of Crew II Modification Kit for Carrier, Armored, M577A3 and SICPS, M1068A3	
PAGE NO.	COLM NO.	LINE NO.	NATIONAL STOCK NUMBER	REFERENCE NO.	FIGURE NO.	ITEM NO.	TOTAL NO. OF MAJOR ITEMS SUPPORTED	RECOMMENDED ACTION

PART III – REMARKS *(Any general remarks or recommendations, or suggestions for improvement of publications and blank forms. Additional blank sheets may be used if more space is needed.)*

--

TYPED NAME, GRADE OR TITLE	TELEPHONE EXCHANGE/AUTOVON, PLUS EXTENSION	SIGNATURE
----------------------------	--	-----------

By Order of the Secretary of the Army:

Official:



JOYCE E. MORROW
*Administrative Assistant to the
Secretary of the Army*

0914704

GEORGE W. CASEY, JR.
*General, United States Army
Chief of Staff*

Distribution:

To be distributed in accordance with the initial distribution number (IDN) 344979 requirements for TB 9-2350-277-40&P-4.

THE METRIC SYSTEM AND EQUIVALENTS

LINEAR MEASURE

1 Centimeter = 10 Millimeters = 0.01 Meters = 0.3937 Inches
 1 Meter = 100 Centimeters = 1000 Millimeters = 39.37 Inches
 1 Kilometer = 1000 Meters = 0.621 Miles

WEIGHTS

1 Gram = 0.001 Kilograms = 1000 Milligrams = 0.035 Ounces
 1 Kilogram = 1000 Grams = 2.2 Lb.
 1 Metric Ton = 1000 Kilograms = 1 Megagram = 1.1 Short Tons

LIQUID MEASURE

1 Milliliter = 0.001 Liters = 0.0338 Fluid Ounces
 1 Liter = 1000 Milliliters = 33.82 Fluid Ounces

SQUARE MEASURE

1 Sq. Centimeter = 100 Sq. Millimeters = 0.155 Sq. Inches
 1 Sq. Meter = 10,000 Sq. Centimeters = 10.76 Sq. Feet
 1 Sq. Kilometer = 1,000 Sq. Meters = 0.386 Sq. Miles

CUBIC MEASURE

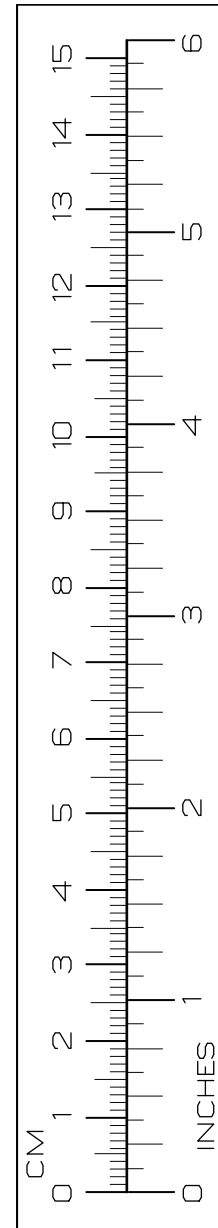
1 Cu. Centimeter = 1000 Cu. Millimeters = 0.06 Cu. Inches
 1 Cu. Meter = 1,000,000 Cu. Centimeters = 35.31 Cu. Feet

TEMPERATURE

$5/9 (^{\circ}\text{F} - 32) = ^{\circ}\text{C}$
 $212^{\circ}\text{ Fahrenheit is equivalent to } 100^{\circ}\text{ Celsius}$
 $90^{\circ}\text{ Fahrenheit is equivalent to } 32.2^{\circ}\text{ Celsius}$
 $32^{\circ}\text{ Fahrenheit is equivalent to } 0^{\circ}\text{ Celsius}$
 $(9/5 \times ^{\circ}\text{C}) + 32 = ^{\circ}\text{F}$

TO CHANGE	TO	MULTIPLY BY
Inches	Centimeters	2.540
Feet	Meters	0.305
Yards	Meters	0.914
Miles	Kilometers	1.609
Square Inches	Square Centimeters	6.451
Square Feet	Square Meters	0.093
Square Yards	Square Meters	0.836
Square Miles	Square Kilometers	2.590
Acres	Square Hectometers	0.405
Cubic Feet	Cubic Meters	0.028
Cubic Yards	Cubic Meters	0.765
Fluid Ounces	Milliliters	29.573
Pints	Liters	0.473
Quarts	Liters	0.946
Gallons	Liters	3.785
Ounces	Grams	28.349
Pounds	Kilograms	0.454
Short Tons	Metric Tons	0.907
Pound-Feet	Newton-Meters	1.356
Pounds per Square Inch	Kilopascals	6.895
Miles per Gallon	Kilometers per Liter	0.425
Miles per Hour	Kilometers per Hour	1.609

TO CHANGE	TO	MULTIPLY BY
Centimeters	Inches	0.394
Meters	Feet	3.280
Meters	Yards	1.094
Kilometers	Miles	0.621
Square Centimeters	Square Inches	0.155
Square Meters	Square Feet	10.764
Square Meters	Square Yards	1.196
Square Kilometers	Square Miles	0.386
Square Hectometers	Acres	2.471
Cubic Meters	Cubic Feet	35.315
Cubic Meters	Cubic Yards	1.308
Milliliters	Fluid Ounces	0.034
Liters	Pints	2.113
Liters	Quarts	1.057
Liters	Gallons	0.264
Grams	Ounces	0.035
Kilograms	Pounds	2.205
Metric Tons	Short Tons	1.102
Newton-Meters	Pound-Feet	0.738
Kilopascals	Pounds per Square Inch	0.145
Kilometers per Liter	Miles per Gallon	2.354
Kilometers per Hour	Miles per Hour	0.621



PIN: 085518-000